

Shore Luxury Vinyl

INSTALLATION INSTRUCTIONS



Montauk Oak 7x48



For your convenience, these products are stocked in our Central Service Center.
Orders placed before noon are available within 1 business day.

IMPORTANT: Please read all the instructions before you begin the installation. Improper installation will void the warranty. When properly installed and cared for, your new flooring will be easy to maintain and will look great for many years.

General Preparations

- Prior to installation, inspect material in daylight for visible faults/damage, including defects or discrepancies in color or shine; check the edges of the flooring for straightness and any damage. No claims on surface defects will be accepted after installation.
- It is preferable to lay boards perpendicular to the window, following the direction of the main source of light. For the best result, make sure to always work from 3 to 4 cartons at a time, mixing the planks during the installation.
- Check if subfloor/site conditions comply with the specifications described in these instructions. If you are not satisfied, do not install, and contact your supplier.
- Flooring products can be damaged by rough handling before installation. Exercise care when handling and transporting these products. Store, transport, and handle the cartons in a manner to prevent any damage. Store cartons flat, never on edge.
- Flooring products can be heavy and bulky. Always use proper lifting techniques when handling these products. Whenever possible, make use of material-handling equipment such as dollies or material carts. Never lift more than you can safely handle.
- Calculate the room surface prior to installation and plan an extra 5-10% of flooring for cutting waste.
- The environment where the flooring is to be installed is critically important with regard to successful installation and continued performance of the flooring products. The flooring is intended to be installed in interior locations only. These interior locations must meet climatic and structural requirements as well.
- In most cases, this product does not need to be acclimated. However, if the boxes of flooring were exposed over 2 hours to extreme temperatures under 50°F / 10°C or over 90°F / 32°C within the 12 hours before the installation, acclimation is required. In this case, keep the boards in room temperature for at least 12 hours in unopened package before you start the installation. The room temperature must be maintained consistent between 50-90°F / 10-32°C before and during the installation.
- Flooring should only be installed in temperature ranges between 50-90°F / 10-32°C, it is necessary to maintain a constant temperature before and during the installation. Portable heaters are not recommended as they may not heat the room and subfloor sufficiently. Kerosene heaters should never be used.
- After installation, make sure that the flooring is not exposed to temperatures less than 0°F / -15°C or greater than 140°F / 60°C.
- For floor surfaces exceeding 6400 ft² / 620 m² and/or lengths exceeding 80 ft / 25 m, use expansion moldings.

Subfloor Information

- The flooring can be installed over most existing hard surface floor coverings, provided that the existing floor surface is clean, flat, dry, securely fastened, structurally sound, and level to 3/16" / 5 mm within 10 ft / 3 m.
- The substrate should not slope more than 1" / 25 mm per 6 ft / 2 m in any direction.

- Depressions, deep grooves, expansion joints, and other subfloor imperfections must be filled with patching and leveling compound.
- Substrates must be free from excessive moisture or alkali. Remove dirt, paint, varnish, wax, oils, solvents, any foreign matter, or contaminants.
- Do not use products containing petroleum, solvents, or citrus oils to prepare substrates as they can cause staining and expansion of the new flooring.
- Although this floor is waterproof, it is not aimed to be used as a moisture barrier. The concrete moisture vapor emissions should not exceed 8 lb / 3.63 kg (ASTM F1869) / 90% RH (ASTM F2170) with a PH limit of 9 / max 2.5% moisture content (CM method).
- This product is also not to be installed in areas that have a risk of flooding such as saunas or outdoor areas.
- Existing sheet vinyl floors should not be heavily cushioned and not exceed more than one layer in thickness. Soft underlayment and soft substrates will diminish the products inherent strength in resisting indentations.

Wood Subfloors

- If this flooring is intended to be installed over an existing wood floor, it is recommended to repair any loose boards or squeaks before you begin the installation.
- Nail or screw every 6" / 15 cm along joints to avoid squeaking.
- Basements and crawl spaces must be dry. Use of a 6 mil / 0.15 mm poly-film is required to cover 100% of the crawl space earth.
- We recommend laying the flooring crossways to the existing floorboards.
- All other subfloors - Plywood, OSB, particleboard, chipboard, wafer board, etc. must be structurally sound and must be installed following their manufacturer's recommendations.

Concrete Subfloors

- Existing concrete subfloors must be fully cured, at least 60 days old, smooth, permanently dry, clean, and free of all foreign material such as dust, wax, solvents, paint, grease, oils, and old adhesive residue. Curing agents and hardeners could cause bonding failure and should not be used.
- We strongly recommend using a minimum 6 mil / 0.15 mm poly-film as a moisture barrier between the concrete subfloor and the flooring.

Do Not Install Over

- Any type of carpet.
- Existing cushion-backed vinyl flooring.
- Floating floor of any type, loose lay, and perimeter fastened sheet vinyl.
- Hardwood flooring / wood subfloors that lay directly on concrete or over dimensional lumber or plywood used over concrete.

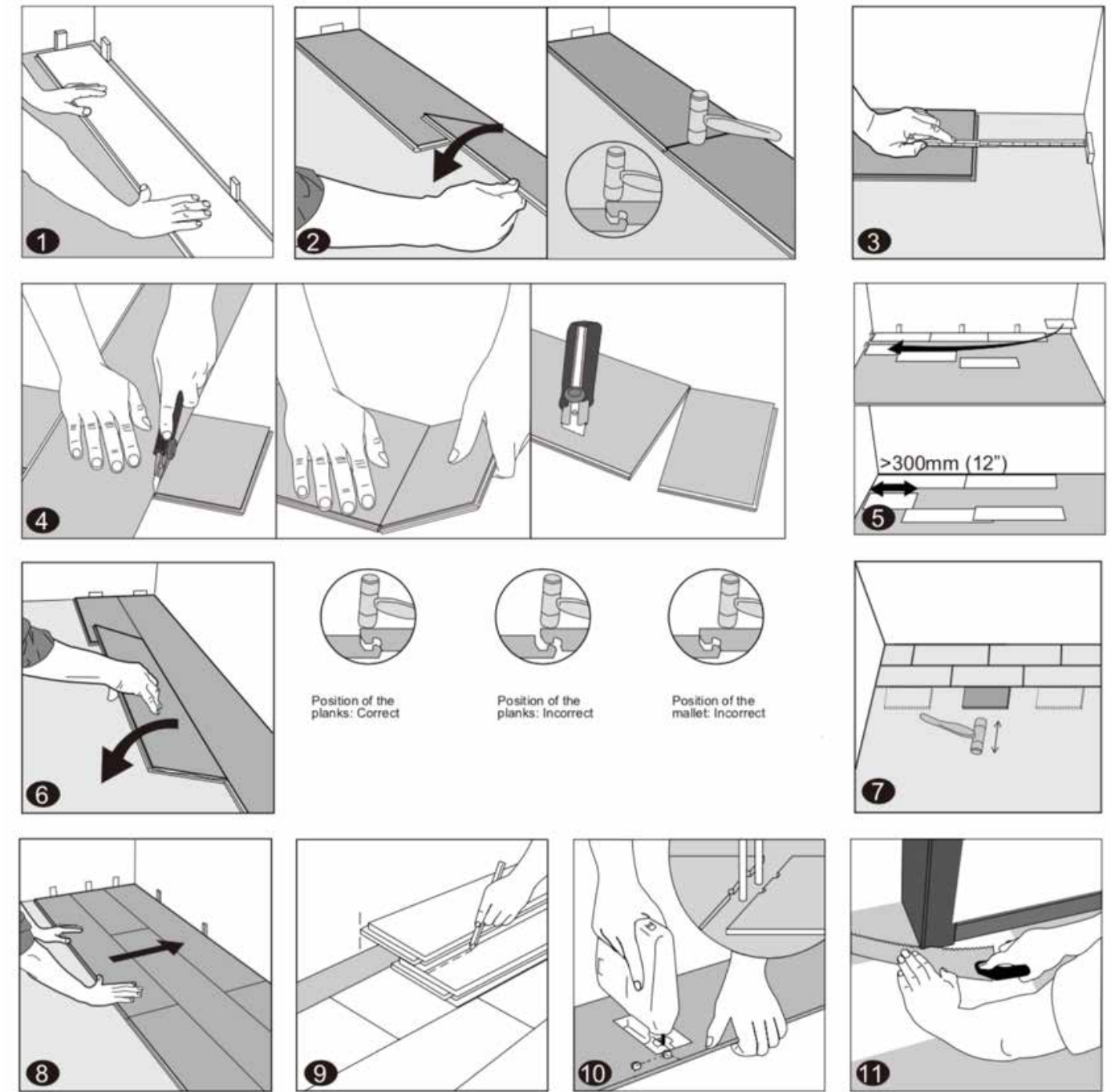
In-Floor Radiant Heat

Flooring can be installed over 1/2" / 12 mm embedded radiant heat using the floating method. Maximum operating temperature should never exceed 85°F / 30°C. Use of an in-floor temperature sensor is recommended to avoid overheating.

- Turn the heat off for 24 hours before, during, and 24 hours after installation when installing over radiant heated subfloors.
- Before installing over newly constructed radiant heat systems, operate the system at maximum capacity to force any residual moisture from the cementitious topping of the radiant heat system.
- Make sure that the temperature in the room is maintained consistent between 50-90°F / 10-32°C before and during the installation.
- Floor temperature must not exceed 85°F / 30°C.
- Once the installation has been completed, the heating system should be turned on and increased gradually (5° increments) until returning to normal operating conditions.
- Refer to the radiant heat system's manufacturer recommendations for additional guidance. Warning: Electric heating mats that are not embedded into the subfloor are not recommended for use underneath the floors. Using electric heating mats that are not embedded and applied directly underneath the floors could void the warranty for your floor in case of failure. It is best to install the flooring over embedded radiant floor heating systems and adhere to the guidelines listed above.

Installation Guidelines

- Remove baseboard, quarter-round moldings, wall base, appliances, and furniture from room. For best results, door trim should be under-cut to allow flooring to move freely without being pinched. After preparation work, sweep and vacuum the entire work area to remove all dust and debris.
- With a floating floor you must always ensure you leave a 1/4" / 6 mm gap between walls and fixtures such as pillars, stairs, etc. These gaps will be covered with trim moldings after the floor is installed.
- Whenever possible, plan the layout so that the joints in the planks do not fall on top of joints or seams in the existing substrate. The end joints of the planks should be staggered a minimum of 8" / 20 cm apart. Avoid installing pieces shorter than 12" / 30 cm at beginning or end of rows. Do not install over expansion joints.
- Do not install your kitchen cabinets directly over your floor. The floor's quality can only be guaranteed as long as the floor is allowed move freely.
- Decide the installation direction. It is recommended to install the boards perpendicular to the window following the direction of the main source of light. In narrow hallways, it is recommended to install the floor parallel to the length of the hall.
- Measure the area to be installed: The board width of the last row shall not be less than 2" / 50 mm. If so, adjust the width of the first row to be installed.
- UNDERLAY: If the floor does not have a pre-attached underlayment, an additional underlayment is recommended in order to improve acoustic performance and absorb some irregularities on the substrate. Best results can be expected with an underlayment of 0.04" / 1 mm to max 0.06" / 1.5 mm thickness with a high density (>11.2 lbs / ft³ / >180 kg / m³) and high compressive strength (>200 kPa) that supports the click system during daily use. Underlayments with a low density and an inadequate compressive strength could damage the locking mechanism and will void warranty. If the floor has a pre-attached underlayment, the use of an additional underlayment could damage the locking mechanism and will void warranty.
- The Shore collection may be glued down on stair applications by removing the IXPE backing and adhering with a construction adhesive. The IXPE backing can be removed using a heat gun, torch, or blow dryer to heat the pad lightly to re-emulsify the adhesive.



Tools Required for Installation

Spacers, rubber mallet, ruler, pencil, tape measure, utility knife, and tapping block.

1. First row, first plank: After thoroughly cleaning the subfloor, you should begin laying from left to right. Position the first plank so that grooved edge is facing you. Place the floorboard 1/4" / 6 mm from the left wall. Use spacers between the wall and the floorboard.
2. First row, second plank: Drop the plank and gently tap down the end with a rubber mallet so it firmly locks into the previous plank until both are at the same height. Make sure both planks are perfectly aligned. It is crucial that the short edges of two connecting planks are correctly aligned and the rubber mallet contacts the plank directly above the short edge which allows for correct locking. Note: Tapping the area close to the short edge, but not directly above it, may result in permanent damage to the joint.

IMPORTANT: If you notice both planks aren't at the same height or are not well locked together,

please follow the disassembling instructions at the bottom of the page, disassemble and check if any debris stuck inside the lock is obstructing. Failure to properly line up the end joint and attempting to force it in while out of alignment could result in permanent damage to the end joint.

3. First row, last plank: Continue installing the first row until you reach the wall on the right. At the end of the first row, leave an expansion gap of 1/4" / 6mm to the wall and measure the length of the last plank to fit.
4. To cut the plank: Use a simple utility knife and ruler, and with the top side facing up, cut heavily and several times on the same axis. The knife will not go through the surface but make a deep cut. You can then lift one half of the plank by using your other hand (placed very close to the cut) to hold down the second half. The plank will split naturally.
5. Second row, first plank: Start the second row with the leftover cut part of the last plank of the previous row. This small plank should measure at least 12" / 30 cm. Otherwise, cut a new plank in half and use it to begin the second row. The end joints of each adjoining row should not be closer than 8" / 20 cm to each other. Whenever practical, use the piece cut from the preceding row to start the next row.
6. Second row, second plank: Click the long side of the plank into the previous row and place it tight to the short end of the previous plank with an angle of 25-30°. Drop the plank and gently tap on the end with a rubber mallet so it firmly locks into the previous plank until both are at the same height. Make sure both planks are perfectly aligned.
7. After finishing the installation of every row: Use tapping block and a small hammer or rubber mallet to gently tap the planks into the click of the previous row to make sure they are tightly clicked together and make sure there is no gap between the long side of the planks installed. Any gapping can compromise the whole installation.
8. Tip: After the first 2-3 rows of planks are installed, they should be checked with a string line to ensure that rows are still running straight. If they are not, it could be that the starting wall has some irregularities that caused bowing in the installation. If so, the starting row of planks may have to be scribed and re-trimmed to account for any unevenness in the wall. This can be done without having to disassemble the beginning rows.
9. To lay the last row: Position a loose board exactly on top of the last row laid. Place another board on top, with the tongue side touching the wall. Draw a line along the edge of this boards, to mark the first board. Cut along the edge of this board to mark the first board. Cut along this line to obtain the required width. Insert this cut board against the wall. The last row should be at least 2" / 50 mm wide. The spacers can then be removed.
10. Holes for pipes: Measure the diameter of the pipe and drill a hole that is 1/2" / 12 mm larger. Saw off a piece and lay the board in place on the floor. Then lay the sawed-off piece in place.
11. Door molding and skirting: Lay a board (with the decorative side down) next to the door molding and saw as shown in the figure. Then slide the floorboard under molding.

Finishing The Installation

Replace molding or wall base, allowing slight clearance between the molding and the planks. Nail the molding to the wall surface, not through the flooring. At doorways and at other areas where the flooring planks may meet other flooring surfaces, the use of a transition molding is required to cover the exposed edge but do not pinch the planks. Leave a 1/4" / 6 mm gap between the planks and the adjoining surface.

Disassembling

Separate the whole row by lifting it up delicately at an angle. To separate the planks, leave them flat on the ground and slide them apart. If planks do not separate easy, you can slightly lift up the planks (5°) when sliding them apart.

Care & Maintenance

After installation, be sure to sweep up all trash and remove debris. Keep the floor covered with heavy paper or cardboard if there is to be additional construction work in the space. Keep leftover material and store it in a climate-controlled space for future needs.

The feet of furniture must always be covered with floor protectors made of non-staining felt or non-pigmented hard plastic. Chairs, sofas, or other furniture with castors must be fitted with soft rubber wheels and have an adequate protective mat or protective castor cups.

When moving furniture take caution and properly protect flooring to avoid scratches.

Sweep and/or vacuum the floor on a regular basis. Never use polishes, waxes, harsh chemicals or abrasive cleaners.

Dry mop floor using a microfiber mop pad or appropriate floor vacuum to remove dust particulate from the floor.

Spray a neutral pH cleaner, such as Aqua Mix AquaKleen onto the floor in manageable areas as it may dry quickly. Use a microfiber mop or towel to clean the floor. Replace with a clean mop head or towel as needed to avoid spreading dirt around. Continue to clean floor in sections as necessary.

As needed, rinse the floor with water only to remove any residual cleaner from the floor.

Avoid direct sunlight exposure for prolonged periods of time as this may result in discoloration. Close blinds during peak sunlight hours as excessive heat and light will subject the flooring to fading.

Any questions? Please reach out directly to your local Mosaic branch.





Hatteras Oak 9x60

mosaic 
Products. Design. Solutions.

Alexandria, VA | Chantilly, VA | Fairfax, VA | Richmond, VA | Virginia Beach, VA
North Bethesda, MD* | Owings Mills, MD* | Greensboro, NC | Raleigh, NC

www.mosaictileco.com



Noted (*) locations are
100% wind powered!
All locations support
renewable power sources.

