

Mosaic Commercial Solutions

LUXURY VINYL



100% Waterproof, Pet Proof, Kid Proof, Life Proof!



v.4-24

mosaic 
Products. Design. Solutions.



Parker Leather 6x48 Plank; Parker Cashmere 18x18 Tile

Note: Due to printing limitations, the images shown are only a representation of coloration. Please view actual vinyl floor material itself to verify all selections.

- Luxury Vinyl Planks - Glue Down
 - Character 4
 - Forward..... 6
 - Parker 8

- Luxury Vinyl Tiles - Glue Down
 - Parker Tile 10

- Luxury Vinyl Planks - Click
 - Amazon..... 12
 - Daroca 14
 - Docks..... 16
 - Foster..... 18
 - Heritage 20
 - Mott 22
 - Shore 24
 - Valley..... 26

- Luxury Vinyl Tiles - Click
 - Carrara..... 28
 - Cement 30
 - Chenille 32
 - Nord..... 34
 - Travertina..... 36

- Trim 38
- Glue Down Construction 40
- Glue Down Installation 41
- Diamond 10 Technology 44
- SPC Layers / Features..... 45
- ABA Layers / Features..... 45
- Click Installation
 - Amazon, Daroca, Docks, Foster, Heritage, Mott, and Valley Planks;
Carrara, Cement, Chenille, Nord, and Travertina Tiles 46
 - Shore 49
- Technical Information
 - Parker Planks and Parker Tiles 53
 - Amazon, Daroca, Docks, Foster, Heritage, Mott, and Valley Planks;
Carrara, Cement, Chenille, Nord, and Travertina Tiles 54
 - Shore 55
- Care & Maintenance 56
- Certification 57
- Warranties 58

CHARACTER



Oyster
AHCHAOYS636-6 or AHCHAOYS636-12



Macadamia
AHCHAMAC636-6 or AHCHAMAC636-12



Barley
AHCHABAR636-6 or AHCHABAR636-12



Cremini
AHCHACRE636-6 or AHCHACRE636-12



Mushroom
AHCHAMUS636-6 or AHCHAMUS636-12



Deep Taupe
AHCHADEE636-6 or AHCHADEE636-12



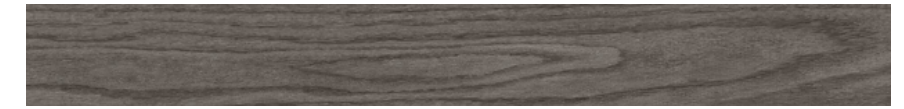
Oyster



Lead



Diamond 10[®] Technology provides the ultimate in scratch, stain, and scuff resistance.



Lead
AHCHALEA636-6 or AHCHALEA636-12



Carob
AHCHACAR636-6 or AHCHACAR636-12

Plank Dimensions	6" x 36" x 2mm
Construction	Solid Vinyl Tile
Wear Layer	6mil or 12mil with Diamond10 Technology
Finish	Embossed
Installation	Glue Down
Warranty (6mil)	15-Year Limited Residential; 5-Year Limited Commercial
Warranty (12mil)	20-Year Limited Residential; 5-Year Limited Commercial

FORWARD



Sand
AHFORSAN636-6 or AHFORSAN636-12



Flint
AHFORFLI636-6 or AHFORFLI636-12



Golden
AHFORGOL636-6 or AHFORGOL636-12



Mocha
AHFORMOC636-6 or AHFORMOC636-12



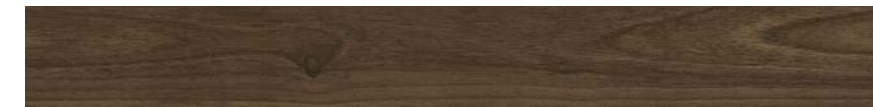
Fawn
AHFORFAW636-6 or AHFORFAW636-12



Slate
AHFORSLA636-6 or AHFORSLA636-12



Espresso
AHFORESP636-6 or AHFORESP636-12



Walnut
AHFORWAL636-6 or AHFORWAL636-12

Plank Dimensions	6" x 36" x 2mm
Construction	Solid Vinyl Tile
Wear Layer	6mil or 12mil with Diamond10 Technology
Finish	Embossed
Installation	Glue Down
Warranty (6mil)	15-Year Limited Residential; 5-Year Limited Commercial
Warranty (12mil)	20-Year Limited Residential; 5-Year Limited Commercial



Oat
AHPAROAT648-12 or AHPAROAT648-20



Camel
AHPARCAM648-12 or AHPARCAM648-20



Hazelnut
AHPARHAZ648-12 or AHPARHAZ648-20



Caramel
AHPARCAR648-12 or AHPARCAR648-20



Silver
AHPARSIL648-12 or AHPARSIL648-20



Shitake
AHPARSHI648-12 or AHPARSHI648-20



Leather
AHPARLEA648-12 or AHPARLEA648-20



Pitch
AHPARPIT648-12 or AHPARPIT648-20



Sable
AHPARSAB648-12 or AHPARSAB648-20



Plank Dimensions	6" x 48" x 2mm or 2.5mm
Construction	Solid Vinyl Tile
Wear Layer	12mil or 20mil with Diamond10 Technology
Finish	Embossed
Installation	Glue Down
Warranty (12mil)	7-Year Limited Residential; 7-Year Limited Commercial
Warranty (20mil)	15-Year Limited Residential; 15-Year Limited Commercial

PARKER TILE



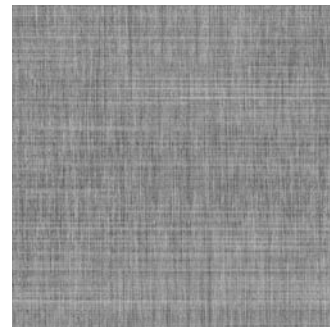
Cotton
AHPARCOT18-12
AHPARCOT18-20



Canvas
AHPARCAN18-12
AHPARCAN18-20



Cashmere
AHPARCAS18-12
AHPARCAS18-20



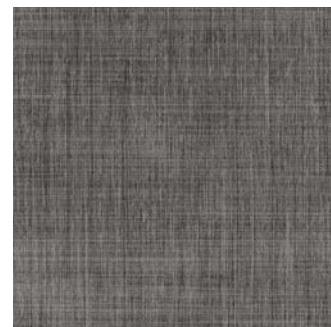
Smudge
AHPARSMU18-12
AHPARSMU18-20



Batik
AHPARBAT18-12
AHPARBAT18-20



Corduroy
AHPARCOR18-12
AHPARCOR18-20



Ink
AHPARINK18-12
AHPARINK18-20



Cotton



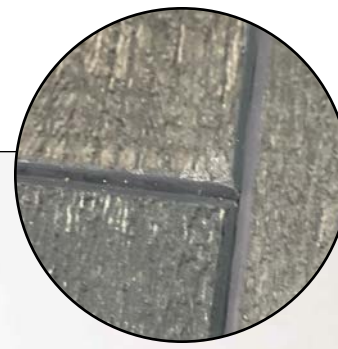
Batik



Cashmere

Plank Dimensions	18" x 18" x 2mm or 2.5mm
Construction	Solid Vinyl Tile
Wear Layer	12mil or 20mil with Diamond10 Technology
Finish	Embossed
Installation	Glue Down
Warranty (12mil)	7-Year Limited Residential; 7-Year Limited Commercial
Warranty (20mil)	15-Year Limited Residential; 15-Year Limited Commercial

Installation
Video



Painted Bevel Edge Detail

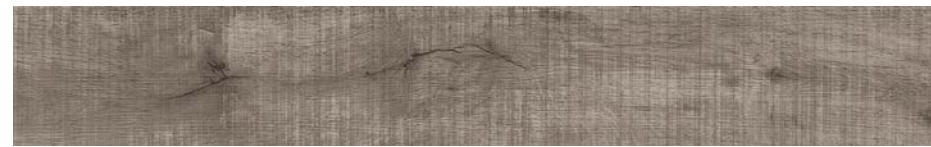


Night

Very High Shade Variation – Each carton will contain planks that will vary in coloration from piece to piece. This is intentional as it adds character and beauty to the look of the final installation. The aesthetic appeal of this product is the natural and inconsistent rustic visual. Be sure to reference multiple samples when selecting for your space.



Natural
FIAMANAT748N



Gray
FIAMAGRA748

Limited inventory – Available by QuickSHIP only while stock lasts



Night
FIAMANIG748

Inventory Clearance Sale – Please confirm availability prior to ordering (Night color only)

Plank Dimensions	7" x 48" x 6.5mm
Construction	Softouch Construction – An “ABA” construction that maintains the performance of rigidcore SPC combined with the soft touch of Luxury flooring. This premium SPC not only provides great comfort underfoot, but excellent sound absorption in addition to increased dimensional stability.
Wear Layer	22mil (included in the 1.3mm layer along with UV protection)
Underlayment	1.5mm IXPE backing for sound insulation and comfort
Edge	Painted Bevel
Finish	Natural Timber Emboss
Installation	5Gi Drop&Click®
Warranty	Limited Lifetime Residential; 20-Year Limited Light to Medium Commercial



Daroca Vanilla 7x48

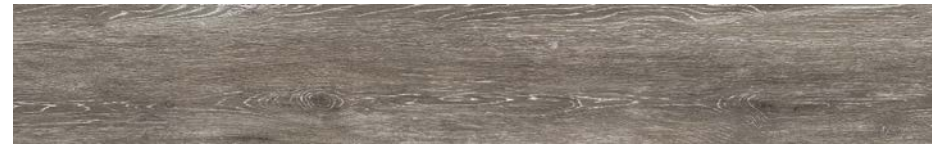


Vanilla
FIDARVAN748N



Beige
FIDARBEI748

Limited inventory – Available by QuickSHIP only while stock lasts



Greige
FIDARGRE748N



Pewter
FIDARPEW748

Very High Shade Variation – Each carton will contain planks that will vary in coloration from piece to piece. This is intentional as it adds character and beauty to the look of the final installation. The aesthetic appeal of this product is the natural and inconsistent rustic visual. Be sure to reference multiple samples when selecting for your space.

Plank Dimensions	7" x 48" x 6mm
Construction	SPC (Stone Polymer Composite) Core Material
Wear Layer	22mil
Underlayment	1.5mm IXPE backing for sound insulation and comfort
Finish	EIR Real Touch™ Technology
Installation	5Gi Drop&Click®
Warranty	Limited Lifetime Residential; 20-Year Limited Light to Medium Commercial

DOCKS

Installation
Video



Latte
FIDOCLAT960N



Cappucino
FIDOCAP960N



Latte

Very High Shade Variation – Each carton will contain planks that will vary in coloration from piece to piece. This is intentional as it adds character and beauty to the look of the final installation. The aesthetic appeal of this product is the natural and inconsistent rustic visual. Be sure to reference multiple samples when selecting for your space.

Plank Dimensions	9" x 60" x 6mm
Construction	SPC (Stone Polymer Composite) Core Material
Wear Layer	22mil
Underlayment	1.5mm IXPE backing for sound insulation and comfort
Finish	EIR Real Touch™ Technology
Installation	5Gi Drop&Click®
Warranty	Limited Lifetime Residential; 20-Year Limited Light to Medium Commercial

FOSTER

Installation
Video



White
FIFOSWHI960N



Gray
FIFOSGRA960N



Teak
FIFOSTEA960N



White



Gray



Teak

This series has a high shade variation that creates a realistic wood grain visual effect with the least amount pattern repetition.

Plank Dimensions	9" x 60" x 6mm
Construction	SPC (Stone Polymer Composite) Core Material
Wear Layer	22mil
Underlayment	1.5mm IXPE backing for sound insulation and comfort
Finish	EIR Real Touch™ Technology
Installation	5Gi Drop&Click®
Warranty	Limited Lifetime Residential; 20-Year Limited Light to Medium Commercial

HERITAGE

Installation
Video



Flax
FIHERFLA748



Honey
FIHERHON748



Wheat
FIHERWHE748



Chestnut
FIHERCHE748

Painted Bevel Edge Detail



Flax



Wheat



Chestnut

Plank Dimensions	7" x 48" x 6mm
Construction	SPC (Stone Polymer Composite) Core Material
Wear Layer	22mil
Underlayment	1mm IXPE backing for sound insulation and comfort
Finish	Natural Timber Emboss
Installation	2G Angle Click
Warranty	Limited Lifetime Residential; 20-Year Limited Commercial

Installation
Video



Gray
FIMOTGRA748



Crema
FIMOTCRE748



Greige
FIMOTGRE748



Taupe
FIMOTTAU748



Wenge
FIMOTWEN748



Crema



Basalt



Basalt
FIMOTBAS748

Plank Dimensions	7" x 48" x 5mm
Construction	SPC (Stone Polymer Composite) Core Material
Wear Layer	12mil
Underlayment	1.0mm IXPE backing for sound insulation and comfort
Finish	Natural Timber Emboss
Installation	2G Angle Click
Warranty	Limited Lifetime Residential; 6-Year Limited Light to Medium Commercial

SHORE



7" x 48"



Montauk Oak
CFSHOMON748

9" x 60"



Hatteras Oak
CFSHOHAT960



Folly Oak
CFSHOFOL960



Painted Bevel Edge Detail

Hatteras



Montauk

NOTE: This product is not available in glue down construction.

Plank Dimensions	7" x 48" x 5mm; 9" x 60" x 5mm
Construction	SPC (Stone Polymer Composite)
Wear Layer	22mil
Underlayment	1mm XPO Backing
Finish	U-Emboss Natural Wood Grain with Painted Bevel Edges
Installation	i4F Locking System
Warranty	Limited Lifetime Residential; Limited 15-Year Commercial

Installation
Video



Beach



Oak



Sienna



Beach
FIVALBEA960N



Sienna
FIVALSIIE960N



Oak
FIVALOAK960N

Plank Dimensions	9" x 60" x 6mm
Construction	SPC (Stone Polymer Composite) Core Material
Wear Layer	22mil
Underlayment	1.5mm IXPE backing for sound insulation and comfort
Finish	EIR Real Touch™ Technology
Installation	5Gi Drop&Click®
Warranty	Limited Lifetime Residential; 20-Year Limited Light to Medium Commercial



Classic
FICARCLA1224

Inventory Clearance Sale – Please confirm availability prior to ordering

Plank Dimensions	12" x 24" x 6.5mm
Construction	Softouch Construction – An “ABA” construction that maintains the performance of rigidcore SPC combined with the soft touch of Luxury flooring. This premium SPC not only provides great comfort underfoot, but excellent sound absorption in addition to increased dimensional stability.
Wear Layer	22mil (included in the 1.3mm layer along with UV protection)
Underlayment	1.5mm IXPE backing for sound insulation and comfort
Edge	Painted Bevel
Finish	Leather
Installation	5Gi Drop&Click®
Warranty	Limited Lifetime Residential; 20-Year Limited Light to Medium Commercial



Painted Bevel Edge Detail



Classic



Classic

CEMENT

Installation
Video



Silver
FICEMSIL1224N



Antracite
FICEMANT1224

Inventory Clearance Sale – Please confirm availability prior to ordering

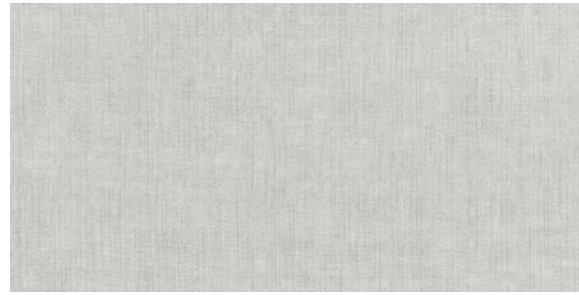


Silver

Plank Dimensions	12" x 24" x 6.5mm
Construction	Softouch Construction – An “ABA” construction that maintains the performance of rigidcore SPC combined with the soft touch of Luxury flooring. This premium SPC not only provides great comfort underfoot, but excellent sound absorption in addition to increased dimensional stability.
Wear Layer	22mil (included in the 1.3mm layer along with UV protection)
Underlayment	1.5mm IXPE backing for sound insulation and comfort
Edge	Painted Bevel
Finish	Concrete
Installation	5Gi Drop&Click®
Warranty	Limited Lifetime Residential; 20-Year Limited Light to Medium Commercial

CHENILLE

Installation
Video



Ash
FICHEASH1224



Gray
FICHEGRA1224

Inventory Clearance Sale – Please confirm availability prior to ordering

Plank Dimensions	12" x 24" x 6.5mm
Construction	Softouch Construction – An “ABA” construction that maintains the performance of rigidcore SPC combined with the soft touch of Luxury flooring. This premium SPC not only provides great comfort underfoot, but excellent sound absorption in addition to increased dimensional stability.
Wear Layer	22mil (included in the 1.3mm layer along with UV protection)
Underlayment	1.5mm IXPE backing for sound insulation and comfort
Edge	Painted Bevel
Finish	Linen
Installation	5Gi Drop&Click®
Warranty	Limited Lifetime Residential; 20-Year Limited Light to Medium Commercial



Painted Bevel Edge Detail

Ash



Gray



Cement
FINORCEM1224
FINORCEM1224 (N)



Antracite
FINORANT1224

Inventory Clearance Sale – Please confirm availability prior to ordering

Plank Dimensions	12" x 24" x 6.5mm
Construction	Softouch Construction – An “ABA” construction that maintains the performance of rigidcore SPC combined with the soft touch of Luxury flooring. This premium SPC not only provides great comfort underfoot, but excellent sound absorption in addition to increased dimensional stability.
Wear Layer	22mil (included in the 1.3mm layer along with UV protection)
Underlayment	1.5mm IXPE backing for sound insulation and comfort
Edge	Painted Bevel
Finish	Stone
Installation	5Gi Drop&Click®
Warranty	Limited Lifetime Residential; 20-Year Limited Light to Medium Commercial



Painted Bevel Edge Detail

Antracite

TRAVERTINA

Installation
Video



Ivory
FITRAIVO1224



Gray
FITRAGRA1224

Inventory Clearance Sale – Please confirm availability prior to ordering



Painted Bevel Edge Detail

Ivory

Plank Dimensions	12" x 24" x 5.5mm
Construction	SPC (Stone Polymer Composite) Core Material
Wear Layer	12mil
Underlayment	1.0mm IXPE backing for sound insulation and comfort
Edge	Painted Bevel
Finish	Stone
Installation	2G Angle Click
Warranty	Limited Lifetime Residential; 6-Year Limited Light to Medium Commercial

TRIM

Schluter Trims

- All styles are 94" long.
- Trim available in Brushed Chrome, Brushed Nickel, and Antique Bronze.
- QuickSHIP: Step, T, and U in Brushed Nickel. All others are Special Order and ship within 3-5 business days.

 <p>VINPRO-S Resilient surfaces edge protection profile</p>	 <p>VINPRO-T Resilient floor covering profile for retrofit applications</p>	 <p>VINPRO-U Resilient transition profile for reducing to lower elevations</p>
 <p>VINPRO-RO Resilient surface edge profile with rounded reveal for stairs and outside wall corners</p>	 <p>VINPRO-STEP Resilient floor covering finishing and edge profile for stairs</p>	

Color Coordinated Moldings – Stair Nose, SlimTrim, and Quarter Round

- All styles are 94" long.
- The use of a polyurethane adhesive such as Gorilla Original Polyurethane Glue or Liquid Nails Polyurethane Construction Adhesive is recommended to hold trim in place where nails are not appropriate.



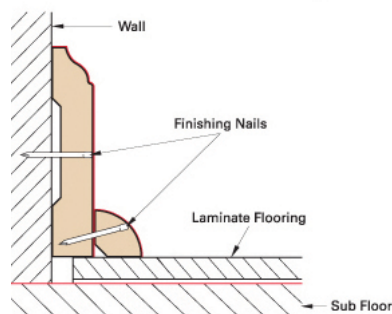
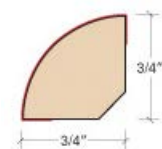
Quarter Round

Conceals the required expansion space between the wall and the vinyl flooring.

Surface Material: Decorative paper

Core Material: Moisture resistant exterior grade composite wood product

Special Order with approximate two week lead time.



TRIM



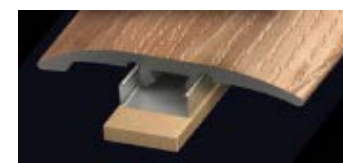
VersaEdge Extra Tall Stair Nose

Combines style and function to enhance the beauty of a staircase or step. For use on flooring with an overall thickness of up to 3/4" (19mm).

Surface Material: High wear resistance aluminum oxide laminate

Core Material: Aluminum

QuickSHIP: All 7x48 and 9x60 Luxury Vinyl Planks



SlimTrim

This 3-in-1 molding functions as a Reducer, T-Molding, and End Cap.

Surface Material: High wear resistance aluminum oxide laminate

Core Material: PVC

QuickSHIP: All 7x48 and 9x60 Luxury Vinyl Planks



SlimTrim Dowel Tree

Dowels are an optional attachment system for SlimTrim moldings and will work for flooring up to 19mm thick. It comes as a tree of eight dowels (typically enough to install one 94" SlimTrim).

QuickSHIP: All 7x48 and 9x60 Luxury Vinyl Planks



Versatrack Shim

Shims are used with SlimTrack for SlimTrim on 3-9.5mm floors, and SlimCap on 5-12.7mm floors. Shims are 94" long.

QuickSHIP: All 7x48 and 9x60 Luxury Vinyl Planks



6mil Underlayment Moisture Barricade 12'x25' (300 sf) roll:

- Limited Lifetime Warranty
- Provides the NWFA required moisture barrier over cement slabs
- Can be used with SPC flooring
- Features an adhesive strip to lockout moisture
- Use with standard foam underlayment for added moisture protection



GLUE DOWN CONSTRUCTION

Character, Forward, Parker Planks, and Parker Tiles

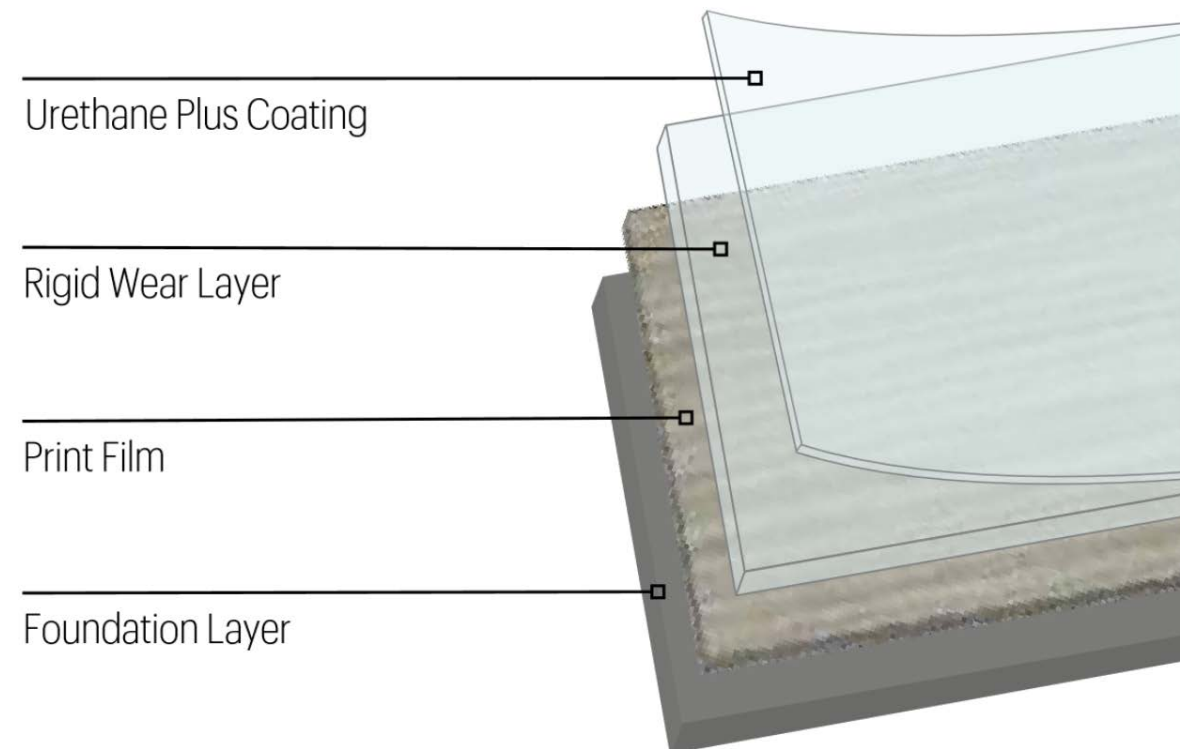
2mm and 2.5mm Total Thickness
6 mil, 12 mil, and 20 mil Wear Layers

Adhesive	Trowel	Set-In-Wet	Dry-to-Touch	Comments
S-295	1/32" deep; 1/16" wide; 1/32" apart U-notch	N/A	Dry to Touch	Foot Traffic: 24 Hours Heavy Rolling Loads: 72 Hours
S-319	Short nap paintroller	N/A	Dry to Touch	Foot Traffic: Immediately Heavy Rolling Loads: Immediately
Flip Spray	N/A	N/A	Dry to Touch Approximately 30 minutes (tacky to touch with no transfer to fingers)	Foot Traffic: Immediately Heavy Rolling Loads: 24 Hours
S-1000*	1/32" deep; 1/16" wide; 1/32" apart U-notch	Set in Wet; Approximately 10-20 minutes	N/A	Foot Traffic: Immediately Heavy Rolling Loads: 8 Hours



Glue Down Adhesive

Flexera® Premium High Track and Universal Adhesives are solvent free, high strength adhesives formulated for the installation of dimensionally stable LVT and vinyl planks without attached backing. Both adhesives may be used interchangeably.



GLUE DOWN INSTALLATION

THANK YOU FOR CHOOSING MOSAIC LUXURY VINYL FLOORING

If properly installed and cared for, your new flooring will be easy to maintain and will look great for years to come. These directions are based on industry standards and best practices. Failure to follow these installation instructions may result in damage to the flooring and void the floor's warranty.

WARNING: FOR EXISTING IN-PLACE RESILIENT FLOOR COVERING AND ASPHALTIC ADHESIVES, DO NOT SAND, DRY SWEEP, DRY SCRAPE, DRILL, SAW, BEADBLAST, OR MECHANICALLY CHIP OR PULVERIZE EXISTING RESILIENT FLOORING, BACKING, LINING FELT, ASPHALTIC "CUTBACK" ADHESIVE, OR OTHER ADHESIVE.

These existing in-place products may contain asbestos fibers and/or crystalline silica. Avoid creating dust. Inhalation of such dust is a cancer and respiratory tract hazard. Smoking by individuals exposed to asbestos fibers greatly increases the risk of serious bodily harm. Unless positively certain that the existing in-place product is a non-asbestos-containing material, you must presume it contains asbestos. Regulations may require that the material be tested to determine asbestos content and may govern removal and disposal of material. Visit rfci.com to see the current edition of the Resilient Floor Covering Institute (RFCI) publication Recommended Work Practices for Removal of Resilient Floor Coverings for instructions on removing all resilient floor covering structures or contact your retailer. Mosaic Luxury Vinyl floor coverings do NOT contain asbestos.

Installation:

Location: All grade levels

Fitting: All methods

Tools Required for Installation

Tape measure, chalk line, utility knife, pencil, straight edge, vacuum or broom, optional tile cutter or cutting shear, subfloor prep supplies, and adhesives.

Keys to Successful Glue Down Installation

- Most installations need an approximate 10% cutting allowance added to the square footage of the room.
- Proper conditioning of the job site is necessary. Planks should not be exposed to sudden temperature changes.
- Store, transport, and handle planks in a manner to prevent any distortions. Distortions will not disappear over time. Store cartons flat, never on edge. Ensure that the planks are lying flat during installation.
- Installations of carpet, metal strips and other transition moldings should not pinch the flooring against the subfloor and should allow for some slight movement wherever practical.
- Protect floor from heavy-rolling loads, other trades, and movement of appliances by using sheets of plywood or similar.

Suitable Substrates

All substrates listed below must be properly prepared and meet certain requirements. There may be other exceptions and special conditions (as noted below) for these substrates to be suitable for the glue down installation system.

- Concrete – dry and smooth on all grade levels.

GLUE DOWN INSTALLATION

- Tiles can be installed over a painted concrete floor.
- Suspended wood subfloors with approved wood underlayments – must have minimum of 18" well-ventilated crawl space underneath including:
- Properly prepared OSB
- Lauan Plywood: Use only Type 1 lauan exterior grade "BB" or "CC" for underlayment. The use of lesser grades of lauan plywood is unacceptable and may cause severe problems when used as an underlayment, including discoloration, indentation, loss of bond and delamination.

IMPORTANT: The use of lauan plywood and other extremely porous wood underlayments will reduce the flash and working time of adhesives. It is best to apply an acrylic-based primer-sealer to any porous substrate prior to installing sheet vinyl. A manufacturer's certification of lauan grade must accompany any claim involving the use of a lauan underlayment.

- Single-layer, fully-adhered, existing resilient floors – must not be foam-backed or cushion-backed
- Ceramic tile, Terrazzo, Marble
- Polymeric Poured (seamless) Floors

DO NOT INSTALL OVER

- Existing resilient tile floors that are below grade
- Existing cushion-backed vinyl flooring
- Carpet
- Hardwood flooring installed directly over concrete
- Existing floating floors
- Particleboard 40lb. density or waferboard

Job Conditions/Preparations

- Resilient flooring should only be installed in temperature-controlled environments. It is necessary to maintain a constant temperature before, during and after the installation. Therefore, the permanent or temporary HVAC system must be in operation before the installation of resilient flooring. Portable heaters are not recommended as they may not heat the room and subfloor sufficiently. Kerosene heaters should never be used.
- All substrates must be structurally sound, dry, clean, flat, and smooth with minimal deflection. Substrates must be free from excessive moisture or alkali. Remove dirt, paint, varnish, wax, oils, solvents and other foreign matter, and contaminants.
- Subfloors must be flat within 3/16" in 10' or 1/8" in 6'.
- For concrete substrates, moisture testing should be conducted and moisture vapor emissions. Acceptable levels are determined by the adhesive being used. Check adhesive label for limitations.
- High spots on the substrate should be leveled and low areas filled with appropriate underlayments.
- Do not use products containing petroleum, solvents, or citrus oils to prepare substrates as they can cause staining and expansion of the new flooring.
- For renovation or remodel work, remove any existing adhesive residue so that 100% of the overall area of the original substrate is exposed.

GLUE DOWN INSTALLATION

- Ceramic tile floors, ceramic and marble grout joints, and irregularities in concrete should be filled and leveled using a cementitious patch to fill and smooth any embossing in the old floor.
- The area to receive resilient flooring materials and adhesives should be maintained at a minimum 65°F for 48 hours before, during, and 48 hours after installation. Maintain minimum temperatures of 55°F thereafter.
- Radiant heated substrates must not exceed a maximum surface temperature of 85°F.
- The subfloor panels must have a smooth, sanded face and show no swelling of edges or surface due to exposure to weather conditions or construction traffic.
- There are numerous products available for use as floor fills, patches, self-leveling underlayments, and trowelable underlayments. They include proprietary blends of compounds such as Portland cement, calcium aluminates, and gypsum-based products. These are recommended by their manufacturers for smoothing rough or uneven subfloors, enhancing acoustical and fire characteristics of structures or as substrates to receive floor covering for otherwise unsuitable subfloor conditions. If the subfloor surface appears to be dusty then apply a primer to the surface.

Safety and Clean Up

Wet adhesive should be cleaned up immediately with soap and water on a clean cloth. Dried adhesive may require the use of a solvent-based adhesive cleaner.

Installation Preparation

Remove baseboard, quarter-round moldings, wall base, appliances, and furniture from room. After preparation work, sweep and vacuum the entire work area to remove all dust and debris. Whenever possible, plan the layout so that the joints in the planks do not fall on top of joints or seams in the existing substrate. The end joints of the planks should be staggered a minimum of 6" apart. Do not install over expansion joints.

Determine which direction the plank will run. Find the center of each of the end walls (the walls perpendicular to the long dimension of the planks) and place a pencil mark on the floor. Connect these points by striking a chalk line down the center of the room. Do a dry layout of planks from the center line to the wall running parallel to the long direction of the planks to determine the width of the last row of planks (Figure 1).

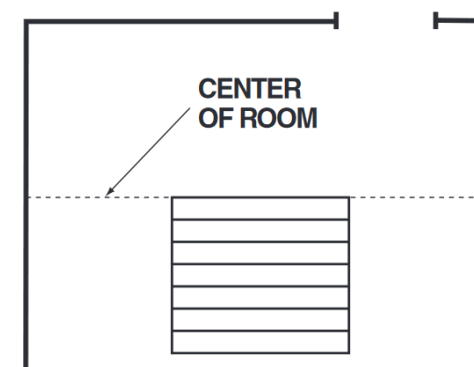


Figure 1. Dry layout to determine width of border plank

Avoid having border pieces less than half with width of the planks. If you find the border planks will be less than 1/2 the width of the plank, the center starting line should be shifted a distance equal to 1/2 the plank width. This will "balance" the room and provide for a larger cut piece at the wall.

NOTE: The subfloor must be thoroughly free from dust and debris. If the subfloor is dusty this may affect the product performance.

NOTE: Stagger end joints by 6". Cut pieces at the ends of rows should be 8" long or longer.

Precautions for All Installation Methods

- When moving appliances or heavy furniture, lay a plywood panel on the floor and "walk" the item across it. This protects the floor from scuffing and tears.
- Use floor protectors on furniture to reduce indentation. The heavier the item, the wider the floor protector needed.

DIAMOND 10 TECHNOLOGY

Character, Forward, Parker Planks, and Parker Tiles

Experience Breakthrough Performance

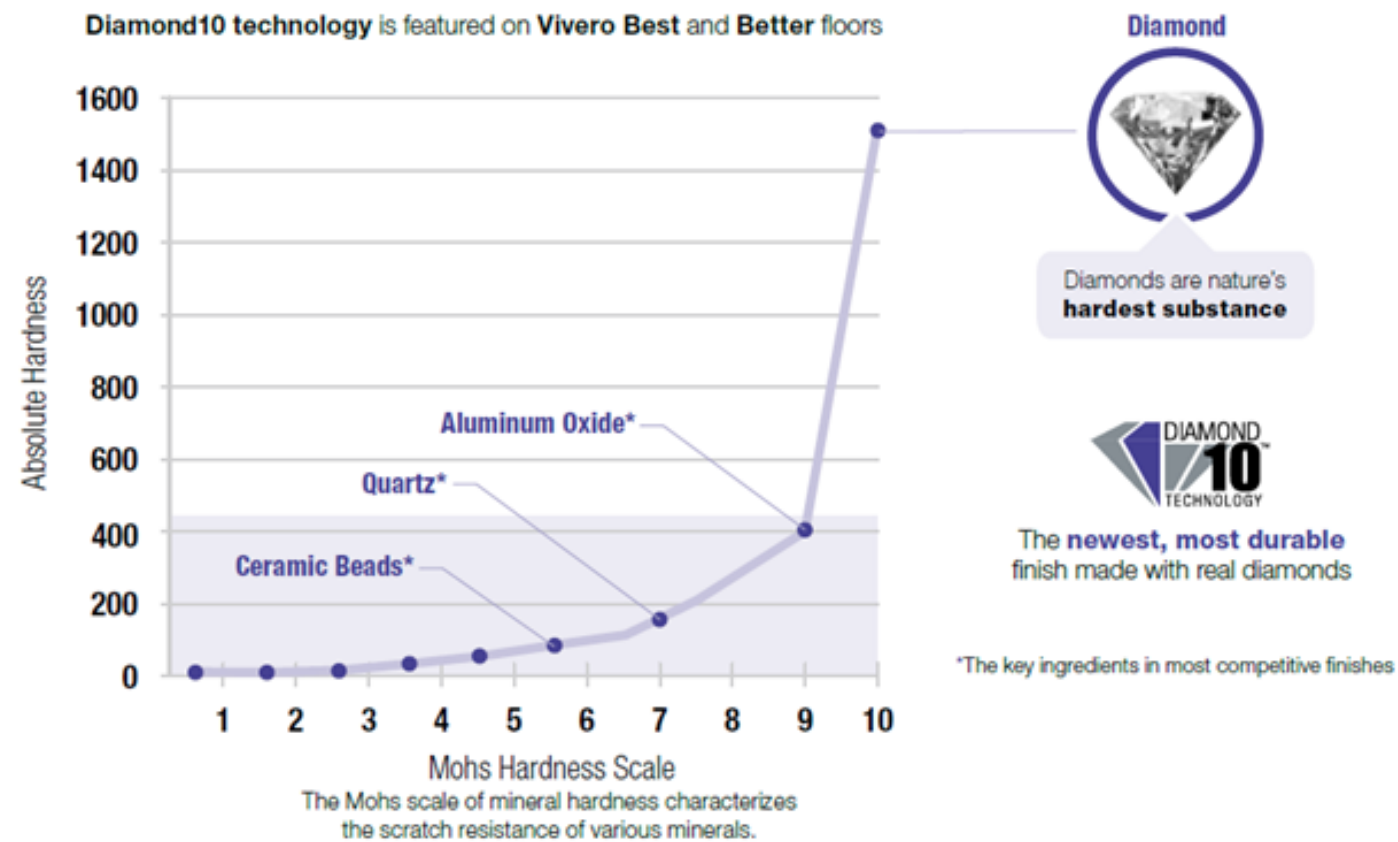
We've harnessed the brilliant properties of diamonds, establishing new standards for performance and durability in flooring. Diamond 10 Technology is a revolutionary, patented innovation that uses cultured diamonds — with all the properties of real diamonds — to provide the ultimate in scratch, stain, and scuff resistance.

With Diamond 10 Technology, you'll never compromise the look you want for the durability you need. Made to stand up to the wear and tear of commercial settings, this low-maintenance solution keeps your floors looking newer, longer.

Industry-Leading Protection, Backed by Science

The diamond — it's one of nature's hardest surfaces, and a symbol of long-lasting quality. Cultured diamonds, used in our patented Diamond 10 Technology, share the same resilient properties of natural diamonds. The result yields a protective technology unmatched in performance and durability, backed by science.

Diamonds outperform all other common competitive flooring finishes on the Mohs scale of mineral hardness, which characterizes the scratch resistance of various materials. Our technology scores a perfect 10 on the scale — the "10" in Diamond 10 Technology.



SPC (STONE POLYMER COMPOSITE) CONSTRUCTION

Daroca, Docks, Foster, Heritage, Mott, Shore, and Valley Planks and Travertina Tiles

1. Ceramic Bead and UV Coating – Protects the color from fading and the textured surface creates an authentic and natural look

2. Wear Layer

3. Design – Exceptionally realistic HD printed wood or stone designs and architectural surfaces

4. SPC Structure

5. IXPE Foam Pad – Provides sound insulation and cushioning for comfort; Odorless and eco-friendly (Shore has XPO backing)

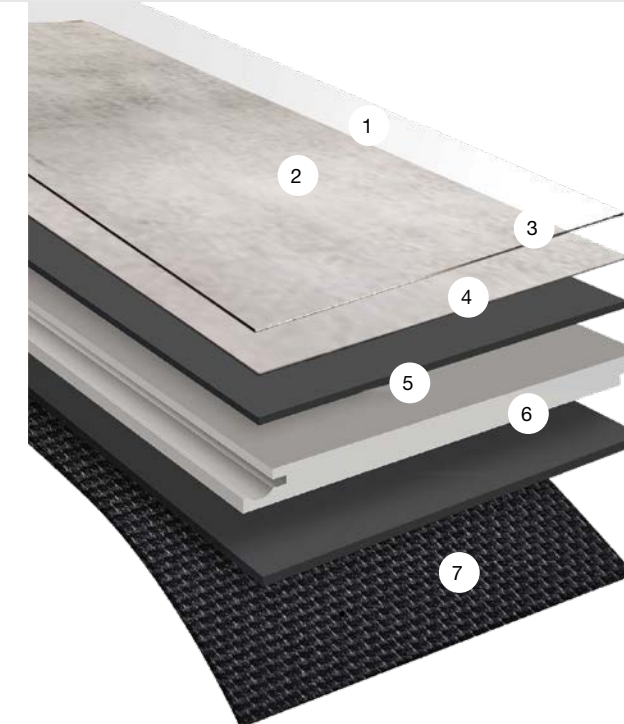


SPC Features

- Allows for a less brittle click system
- Offers greater impact resistance than WPC
- Waterproof – 100% closed cell foam membrane; Inert to any water absorption
- IXPE (Irradiation cross-linked polyethylene) backed premium acoustical underlayment impervious to mold, mildew, rot, and bacteria. Cushions the flooring for a softer feel when walking.
- Excellent sound under foot as well as a heat preserver

ABA SOFTOUCH CONSTRUCTION

Amazon Planks and Carrara, Cement, Chenille, and Nord Tiles



1. UV Coating

2. Wear Layer

3. High Definition Design Films

4. LVT Layer

5. 100% Virgin Extruding Diamond Core Board

6. LVT Layer

7. IXPE Foam Pad

ABA Features

- Softouch Construction – An “ABA” construction that maintains the performance of rigidcore SPC combined with the soft touch of Luxury flooring
- Provides great comfort underfoot, excellent sound absorption, and increased dimensional stability

CLICK INSTALLATION

Amazon, Daroca, Docks, Foster, Heritage, Mott, and Valley Planks
Carrara, Cement, Chenille, Nord, and Travertina Tiles

IMPORTANT: Read these instructions before starting your project. It is imperative that the job-site environment and the subfloor meet the requirements noted in this guide. Additionally, if proper method of installation is not followed, the click system will not engage correctly resulting in damage to the click system itself, and subsequently planks that will buckle, separate, or lift from one another.

Photos of a correct installation that follow the instructions below:



Photos of incorrectly installed material:



Recommended Use

Mosaic Luxury Vinyl Flooring can be installed on all grade levels that are temperature controlled. This product is recommended for residential and light to medium commercial interior use only. Mosaic Luxury Vinyl Flooring should not be installed in areas where a motorized wheelchair is being utilized. Product must be inspected prior to installation. Installation of any damaged or defective planks constitutes acceptance and Warranty claims will not be accepted after flooring has been installed.

Jobsite Conditions

All areas of installation should contain functioning HVAC equipment. Radical fluctuations in temperature can result in extreme expansion and contraction of the flooring. It is not necessary to acclimate Mosaic Luxury Vinyl unless the material has been stored at temperatures below 40°F or above 100°F within 12 hours of the installation. If material has been stored at these temperatures, product should be acclimated in the room where the installation will occur for 12-24 hours at a temperature between 55° and 85°.

Always stack boxes flat to avoid warping the planks. It is recommended to keep the stacks shorter than eight cartons high.

CLICK INSTALLATION

Amazon, Daroca, Docks, Foster, Heritage, Mott, and Valley Planks
Carrara, Cement, Chenille, Nord, and Travertina Tiles

Subfloor Preparation

Substrate must be structurally sound. Subfloor must be flat within 1/8" over 6', and 3/16" over a 10' span. Variations in flatness must either be sanded down or leveled with a suitable floor self-leveling compound such as Custom's Techlevel WSF or TEC's Level Set 300.

As a floating floor, Mosaic Luxury Vinyl will bridge minor floor imperfections and gaps, but heavy roughness or unevenness in the subfloor may telegraph through the new floor covering. It is important that the subfloor is clean and free from dirt or debris. Never install Mosaic Luxury Vinyl directly over residual asphalt-type (cut back) adhesive. Residual cut back adhesive should be completely removed and covered with a high-quality latex underlayment. The installer is responsible for making sure that site conditions are appropriate prior to the installation. ****Use of a separate underlayment will hinder proper installation of the product and void warranty.****

Wood Subfloors

It is recommended all Mosaic Luxury Vinyl be installed over a minimum of 3/4" thick wood subfloors. Screw down all loose areas or replace as needed. Be sure to confirm the moisture level with a moisture meter and test in multiple areas. Results must be 12% or less on average. Anything greater should be addressed prior to installation. Never apply a vapor barrier over wood subfloors.

Concrete Subfloors

It is important for new concrete floors to cure for at least 60 days. Any high spots should be ground down to ensure a level floor. Additionally, any low spots should be filled with a leveling compound such as Custom's Techlevel WSF or TEC's Level Set 300. Test the moisture level in multiple areas. Slabs with moisture levels exceeding 8lbs per 1000sqft in 24hrs using the Moisture Vapor Emissions Rate test, or over 75% when using the Relative Humidity test, will require the addition of a 6mil polyethylene moisture barrier. When a moisture barrier is installed, note that all seams are to have an 8" overlap taped with a waterproof adhesive such as duct tape. Vapor barriers must also be installed at least 1" up the wall.

Existing Floors

Mosaic Luxury Vinyl may be installed over existing clean, flat, dry, and well adhered existing tile, vinyl, or hardwood flooring with wood subfloors. Any existing wood glued directly to concrete must be removed prior to installation. Existing sheet vinyl, VCT, LVT, ceramic tile, and terrazzo must be flat.

Radiant Heat

Mosaic Luxury Vinyl may be installed over radiant heating systems such as Schluter Ditra Heat or Suntouch provided the heating system is covered by a self-leveling mortar such as Custom's Techlevel WSF or TEC's Level Set 300. Heated floor systems must be installed and functioning for a minimum of two weeks prior to installing Mosaic Luxury Vinyl. The temperature should remain at 60°F for one week prior to installation. It may be gradually increased in daily increments of 10° to minimize any shock to the Mosaic Luxury Vinyl flooring. The surface temperature should not exceed 95°F. Note that area rugs will increase the surface temperature by 3°- 5°F degrees.

CLICK INSTALLATION

Amazon, Daroca, Docks, Foster, Heritage, Mott, and Valley Planks
Carrara, Cement, Chenille, Nord, and Travertina Tiles

Installation Guidelines

It is recommended that a 10% overage is added for cutting and waste material. It is also recommended to keep an extra box on hand for potential future repairs. A minimum 3/8" expansion gap must be placed between the planks and walls. Areas greater than 50 feet in one direction require expansion gaps.

Always work from multiple cartons. Mix and install product from 2-3 cartons at a time in order to achieve desirable plank variation.

Always undercut wood doorjamb. Check local building code for metal door jamb. If they cannot be cut, then proper expansion must be maintained.

Use care when installing wall moldings and transition strips to not fasten through the MLV flooring.

If cabinets are to be installed on top of the flooring (including kitchen islands), area of material under cabinets must be fully adhered to the subfloor (including an additional 2' beyond the cabinetry) using a premium pressure-sensitive adhesive such as TEC's Parabond 5092.

With Click Systems, using a glue down method or installing under cabinets will not be covered under warranty.

Tools Required for Installation

Tape Measure, Utility Knife, Jigsaw, Tapping Block or Rubber Mallet, Pull Bar, 3/8" Spacers, T-Square, Safety Glasses, Broom or Vacuum, and, if necessary, tools for subfloor repair.

Complete installation instructions can be found at:

https://www.mosaictileco.com/Catalogs/MosaicLuxuryVinyl/MLV_Installation_Instructions.pdf

2G Installation Video



Heritage and Mott
Planks and
Travertina Tiles

5G Installation Video



Amazon, Daroca, Docks,
Foster, and Valley Planks
Carrara, Cement,
Chenille, and Nord Tiles

CLICK INSTALLATION

Shore Planks

IMPORTANT: Please read all the instructions before you begin the installation. Improper installation will void the warranty. When properly installed and cared for, your new flooring will be easy to maintain and will look great for many years.

General Preparations

- Prior to installation, inspect material in daylight for visible faults/damage, including defects or discrepancies in color or shine; check the edges of the flooring for straightness and any damage. No claims on surface defects will be accepted after installation.
- It is preferable to lay boards perpendicular to the window, following the direction of the main source of light. For the best result, make sure to always work from 3 to 4 cartons at a time, mixing the planks during the installation.
- Check if subfloor/site conditions comply with the specifications described in these instructions. If you are not satisfied, do not install, and contact your supplier.
- Flooring products can be damaged by rough handling before installation. Exercise care when handling and transporting these products. Store, transport, and handle the cartons in a manner to prevent any damage. Store cartons flat, never on edge.
- Flooring products can be heavy and bulky. Always use proper lifting techniques when handling these products. Whenever possible, make use of material-handling equipment such as dollies or material carts. Never lift more than you can safely handle.
- Calculate the room surface prior to installation and plan an extra 5-10% of flooring for cutting waste.
- The environment where the flooring is to be installed is critically important with regard to successful installation and continued performance of the flooring products. The flooring is intended to be installed in interior locations only. These interior locations must meet climatic and structural requirements as well.
- In most cases, this product does not need to be acclimated. However, if the boxes of flooring were exposed over 2 hours to extreme temperatures under 50°F / 10°C or over 90°F / 32°C within the 12 hours before the installation, acclimation is required. In this case, keep the boards in room temperature for at least 12 hours in unopened package before you start the installation. The room temperature must be maintained consistent between 50-90°F / 10-32°C before and during the installation.
- Flooring should only be installed in temperature ranges between 50-90°F / 10-32°C, it is necessary to maintain a constant temperature before and during the installation. Portable heaters are not recommended as they may not heat the room and subfloor sufficiently. Kerosene heaters should never be used.
- After installation, make sure that the flooring is not exposed to temperatures less than 0°F / -15°C or greater than 140°F / 60°C.
- For floor surfaces exceeding 6400 ft² / 620 m² and/or lengths exceeding 80 ft / 25 m, use expansion moldings.

Subfloor Information

- The flooring can be installed over most existing hard surface floor coverings, provided that the existing floor surface is clean, flat, dry, securely fastened, structurally sound, and level to 3/16" / 5 mm within 10 ft / 3 m.

CLICK INSTALLATION

Shore Planks

- The substrate should not slope more than 1" / 25 mm per 6 ft / 2 m in any direction.
- Depressions, deep grooves, expansion joints, and other subfloor imperfections must be filled with patching and leveling compound.
- Substrates must be free from excessive moisture or alkali. Remove dirt, paint, varnish, wax, oils, solvents, any foreign matter, or contaminants.
- Do not use products containing petroleum, solvents, or citrus oils to prepare substrates as they can cause staining and expansion of the new flooring.
- Although this floor is waterproof, it is not aimed to be used as a moisture barrier. The concrete moisture vapor emissions should not exceed 8 lb / 3.63 kg (ASTM F1869) / 90% RH (ASTM F2170) with a PH limit of 9 / max 2.5% moisture content (CM method).
- This product is also not to be installed in areas that have a risk of flooding such as saunas or outdoor areas.
- Existing sheet vinyl floors should not be heavily cushioned and not exceed more than one layer in thickness. Soft underlayment and soft substrates will diminish the products inherent strength in resisting indentations.

Wood Subfloors

- If this flooring is intended to be installed over an existing wood floor, it is recommended to repair any loose boards or squeaks before you begin the installation.
- Nail or screw every 6" / 15 cm along joints to avoid squeaking.
- Basements and crawl spaces must be dry. Use of a 6 mil / 0.15 mm poly-film is required to cover 100% of the crawl space earth.
- We recommend laying the flooring crossways to the existing floorboards.
- All other subfloors - Plywood, OSB, particleboard, chipboard, wafer board, etc. must be structurally sound and must be installed following their manufacturer's recommendations.

Concrete Subfloors

- Existing concrete subfloors must be fully cured, at least 60 days old, smooth, permanently dry, clean, and free of all foreign material such as dust, wax, solvents, paint, grease, oils, and old adhesive residue. Curing agents and hardeners could cause bonding failure and should not be used.
- We strongly recommend using a minimum 6 mil / 0.15 mm poly-film as a moisture barrier between the concrete subfloor and the flooring.

Do Not Install Over

- Any type of carpet.
- Existing cushion-backed vinyl flooring.
- Floating floor of any type, loose lay, and perimeter fastened sheet vinyl.
- Hardwood flooring / wood subfloors that lay directly on concrete or over dimensional lumber or plywood used over concrete.

CLICK INSTALLATION

Shore Planks

In-Floor Radiant Heat

Flooring can be installed over 1/2" / 12 mm embedded radiant heat using the floating method. Maximum operating temperature should never exceed 85°F / 30°C. Use of an in-floor temperature sensor is recommended to avoid overheating.

- Turn the heat off for 24 hours before, during, and 24 hours after installation when installing over radiant heated subfloors.
- Before installing over newly constructed radiant heat systems, operate the system at maximum capacity to force any residual moisture from the cementitious topping of the radiant heat system.
- Make sure that the temperature in the room is maintained consistent between 50-90°F / 10-32°C before and during the installation.
- Floor temperature must not exceed 85°F / 30°C.
- Once the installation has been completed, the heating system should be turned on and increased gradually (5° increments) until returning to normal operating conditions.
- Refer to the radiant heat system's manufacturer recommendations for additional guidance. Warning: Electric heating mats that are not embedded into the subfloor are not recommended for use underneath the floors. Using electric heating mats that are not embedded and applied directly underneath the floors could void the warranty for your floor in case of failure. It is best to install the flooring over embedded radiant floor heating systems and adhere to the guidelines listed above.

Installation Guidelines

- Remove baseboard, quarter-round moldings, wall base, appliances, and furniture from room. For best results, door trim should be under-cut to allow flooring to move freely without being pinched. After preparation work, sweep and vacuum the entire work area to remove all dust and debris.
- With a floating floor you must always ensure you leave a 1/4" / 6 mm gap between walls and fixtures such as pillars, stairs, etc. These gaps will be covered with trim moldings after the floor is installed.
- Whenever possible, plan the layout so that the joints in the planks do not fall on top of joints or seams in the existing substrate. The end joints of the planks should be staggered a minimum of 8" / 20 cm apart. Avoid installing pieces shorter than 12" / 30 cm at beginning or end of rows. Do not install over expansion joints.
- Do not install your kitchen cabinets directly over your floor. The floor's quality can only be guaranteed as long as the floor is allowed move freely.
- Decide the installation direction. It is recommended to install the boards perpendicular to the window following the direction of the main source of light. In narrow hallways, it is recommended to install the floor parallel to the length of the hall.
- Measure the area to be installed: The board width of the last row shall not be less than 2" / 50 mm. If so, adjust the width of the first row to be installed.
- UNDERLAY: If the floor does not have a pre-attached underlayment, an additional underlayment is recommended in order to improve acoustic performance and absorb some irregularities on the substrate. Best results can be expected with an underlayment of 0.04" / 1 mm to max 0.06" / 1.5 mm thickness with a high density (>11.2 lbs / ft³ / >180 kg / m³) and high compressive strength (>200 kPa) that supports the click system during daily use. Underlayments with a low density

CLICK INSTALLATION

Shore Planks

and an inadequate compressive strength could damage the locking mechanism and will void warranty. If the floor has a pre-attached underlayment, the use of an additional underlayment could damage the locking mechanism and will void warranty.

- The Shore collection may be glued down on stair applications by removing the IXPE backing and adhering with a construction adhesive. The IXPE backing can be removed using a heat gun, torch, or blow dryer to heat the pad lightly to re-emulsify the adhesive.

Tools Required for Installation

Spacers, rubber mallet, ruler, pencil, tape measure, utility knife, and tapping block.

Finishing The Installation

Replace molding or wall base, allowing slight clearance between the molding and the planks. Nail the molding to the wall surface, not through the flooring. At doorways and at other areas where the flooring planks may meet other flooring surfaces, the use of a transition molding is required to cover the exposed edge but do not pinch the planks. Leave a 1/4" / 6 mm gap between the planks and the adjoining surface.

Disassembling

Separate the whole row by lifting it up delicately at an angle. To separate the planks, leave them flat on the ground and slide them apart. If planks do not separate easy, you can slightly lift up the planks (5°) when sliding them apart.

Complete installation instructions can be found at:

https://www.mosaictileco.com/Catalogs/MosaicLuxuryVinyl/Tech/Shore_LVP_Installation_Instructions.pdf

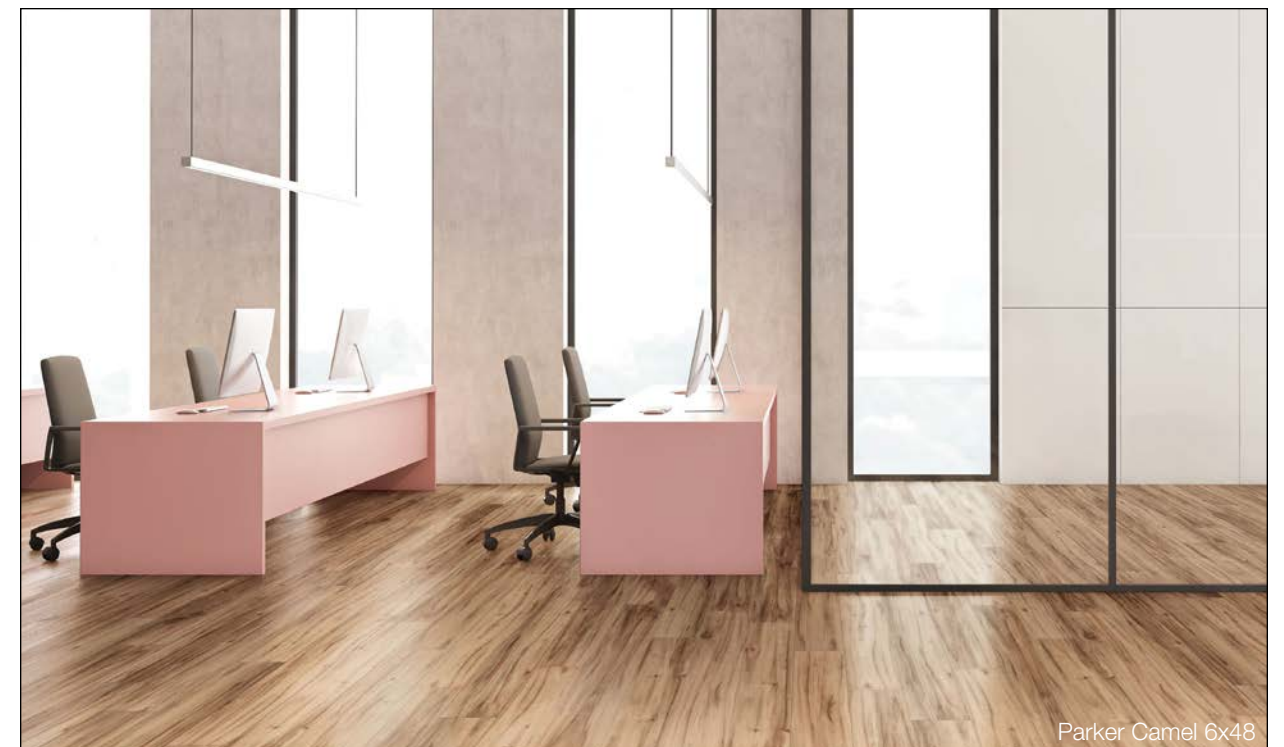


Folly Oak 9x60

TECHNICAL INFORMATION

Parker Planks and Parker Tiles

Item	Test Method	Requirement	Result
Thickness	ASTM F386	Nominal ±0.005 in.	Meets
Wear Layer Thickness	ASTM F410	0.020 in. (0.5 mm) minimum for Commercial Use	Meets
Size	ASTM F2421/F2055	± 0.016 in. per linear foot	Meets
Squareness	ASTM F2421/F2055	0.010 in. maximum	Meets
Residual Indentation	ASTM F1914	Average less than 8%	Meets
Dimensional Stability	Internal	≤ 0.018 in. per linear ft. MD ≤ 0.012 in. per lin. ft. AMD	Meets
Chemical Resistance	ASTM F925	No more than slight change in surface dulling, attack or staining	Meets
Resistance to Heat	ASTM F1514	ΔE < 8	Meets
Resistance to Light	ASTM F1515	ΔE < 8	Meets
Static Load Resistance @ 250	ASTM F970	< 0.005 in.	Meets
Static Load Resistance	ASTM F970	≤ 0.005 in.	2000 psi
Fire Test Data – Flame Spread	ASTM E648	0.45 W/cm 2 or more Class 1	Meets
Fire Test Data – Smoke Evolution	ASTM E 84	450 or less	Meets
ADA Standards for Accessible Design	Chapter 3, Section 302.1	Floor surfaces shall be stable, firm and slip resistant	Meets
Static Coefficient of Friction	ASTM D2047/UL 410	≤ 0.5	Meets



Parker Camel 6x48

TECHNICAL INFORMATION

Amazon, Daroca, Docks, Foster, Heritage, Mott, and Valley Planks
Carrara, Cement, Chenille, Nord, and Travertina Tiles

Item	Test Method	Result
Type of Floor Covering	EN ISO 10582	Compact resilient floor covering
CE Certification	EN 14041	Yes
Classification	EN ISO 10874	Residential: 21 Commercial: 33 Industrial: 42
Dimensional Stability	EN ISO 23999	≤ 0.10 %
Reaction to Fire	EN 13501-1	Bfl s1 on concrete and Cft s1 on wood substrate
Residual Indentation	EN ISO 24343-1	≤ 0.05 mm
Furniture Leg	EN 424	No damage
Castor Chair	EN ISO 4918	No damage
Curl Resultant to Heat	EN ISO 23999	≤ 2 mm
Underfloor Heating	EN ISO 10456	Suitable - Max. 27°C
Thermal Resistance	ISO 10456	0.03 m2 K/W
Impact Sound Reduction	EN ISO EN 717-2	ΔLw = 2 dB
Reduction of In Room Impact Noise	NF EN ISO 31-074	Class C (Ln, e, w < 85dB)
Light Fastness	EN ISO 105-B02	≥ 6
Resistance to Chemicals	EN ISO 26987	High resistance
Slip Resistance	EN 13893	μ ≥ 0.30
Electrical Properties	EN 1015	≤ 2kV on concrete
Adhesion Wear Layer	EN 431	≥ 50N / 50mm



TECHNICAL INFORMATION

Shore Planks

Item	Test Method	Requirement	Result
Surface Integrity	ASTM F1914	No puncture	Compliant
Dimensional Stability	ASTM F2199 / ISO 23999	W/L: ≤ 0.2% (Commercial) Curling: ≤ 2mm	Compliant
Length	ISO 24337	+/- 2mm	Compliant
Width	ISO 24337	+/- 0.4mm	Compliant
Total Thickness	ASTM F387	+/- 0.2mm (with backing)	Compliant
Openings	ISO 24337	Average: ≤ 0.1mm Max: ≤ 0.2mm	Compliant
Height Difference	ISO 24337	Average: ≤ 0.1mm Max: ≤ 0.15mm	Compliant
Squareness	ASTM F2055	≤ 0.25mm	Compliant
Flatness	ISO 24337	Length: ≤ 0.50% (concave) / ≤ 1.0% (convex) Width: ≤ 0.10% (concave) / ≤ 0.15% (convex)	Compliant
Residual Indentation	ASTM F1914 ASTM F970	≤ 0.18mm ≤ 0.13mm (250psi)	Compliant
Resistance to Chemicals	ASTM F925	Slight change only	Compliant
Resistance to Light	ASTM F1515	Δ E ≤ 8	Compliant
Resistance to Heat	ASTM F1514	Δ E ≤ 8	Compliant
Thickness Swell	ASTM F3261	Max 2% without backing Max 5% with backing	Compliant
Slip Resistance	ASTM C1028	≥ 0.5	Compliant
Critical Radiantflux	ASTM E648	Class 1 (> 0.45W/cm2)	Compliant
Smoke Density	ASTM E662	< 450 (under non-flaming exposure)	Compliant
Airborne Sound Transmission	ASTM E413-16	≥ 50	68*
Impact Sound Transmission	ASTM E989-6	≥ 50	66*
Reducing Impact Sound Transmission	ASTM E2190-16	NA	22*

*Acoustic performance results are provided

CARE & MAINTENANCE

After installation, be sure to sweep up all trash and remove debris. Keep the floor covered with heavy paper or cardboard if there is to be additional construction work in the space. Keep leftover material and store it in a climate-controlled space for future needs.

The feet of furniture must always be covered with floor protectors made of non-staining felt or non-pigmented hard plastic. Chairs, sofas, or other furniture with castors must be fitted with soft rubber wheels and have an adequate protective mat or protective castor cups.

When moving furniture take caution and properly protect flooring to avoid scratches.

Sweep and/or vacuum the floor on a regular basis. Never use polishes, waxes, harsh chemicals or abrasive cleaners on Mosaic Luxury Vinyl.

Dry mop floor using a microfiber mop pad or appropriate floor vacuum to remove dust particulate from the floor.

Spray a neutral pH cleaner, such as Aqua Mix AquaKleen onto the floor in manageable areas as it may dry quickly. Use a microfiber mop or towel to clean the floor. Replace with a clean mop head or towel as needed to avoid spreading dirt around. Continue to clean floor in sections as necessary.

As needed, rinse the floor with water only to remove any residual cleaner from the floor.

Avoid direct sunlight exposure for prolonged periods of time as this may result in discoloration. Close blinds during peak sunlight hours as excessive heat and light will subject the flooring to fading.

Any questions? Please reach out directly to your local Mosaic Sales Representative.



CERTIFICATION

All Series



Scientific Certification Systems (SCS Global) is a neutral third party leader in quality certification for environmental safety standards. FloorScore is specific to the hard surface flooring industry and meets CARB requirements for indoor air quality as well as green building standards including LEED.

Shore Planks



The ASSURE CERTIFIED standard provides verification that the flooring product was manufactured to the highest standards and meets all the ASSURE CERTIFIED™ requirements for indoor air quality, rigorous performance, and low heavy metals and ortho-phthalates content.



GREENGUARD compliance indicates a product has been tested and evaluated to meet stringent chemical emissions limits.



WARRANTY

Character and Forward Planks

6mil: 15-Year Limited Residential; 5-Year Limited Commercial
12mil: 20-Year Limited Residential; 5-Year Limited Commercial

Parker Planks and Parker Tiles

12mil: 7-Year Limited Residential; 7-Year Limited Commercial
20mil: 15-Year Limited Residential; 15-Year Limited Commercial

Amazon, Daroca, Docks, Foster, Heritage, and Valley Planks Carrara, Cement, Chenille, and Nord Tiles

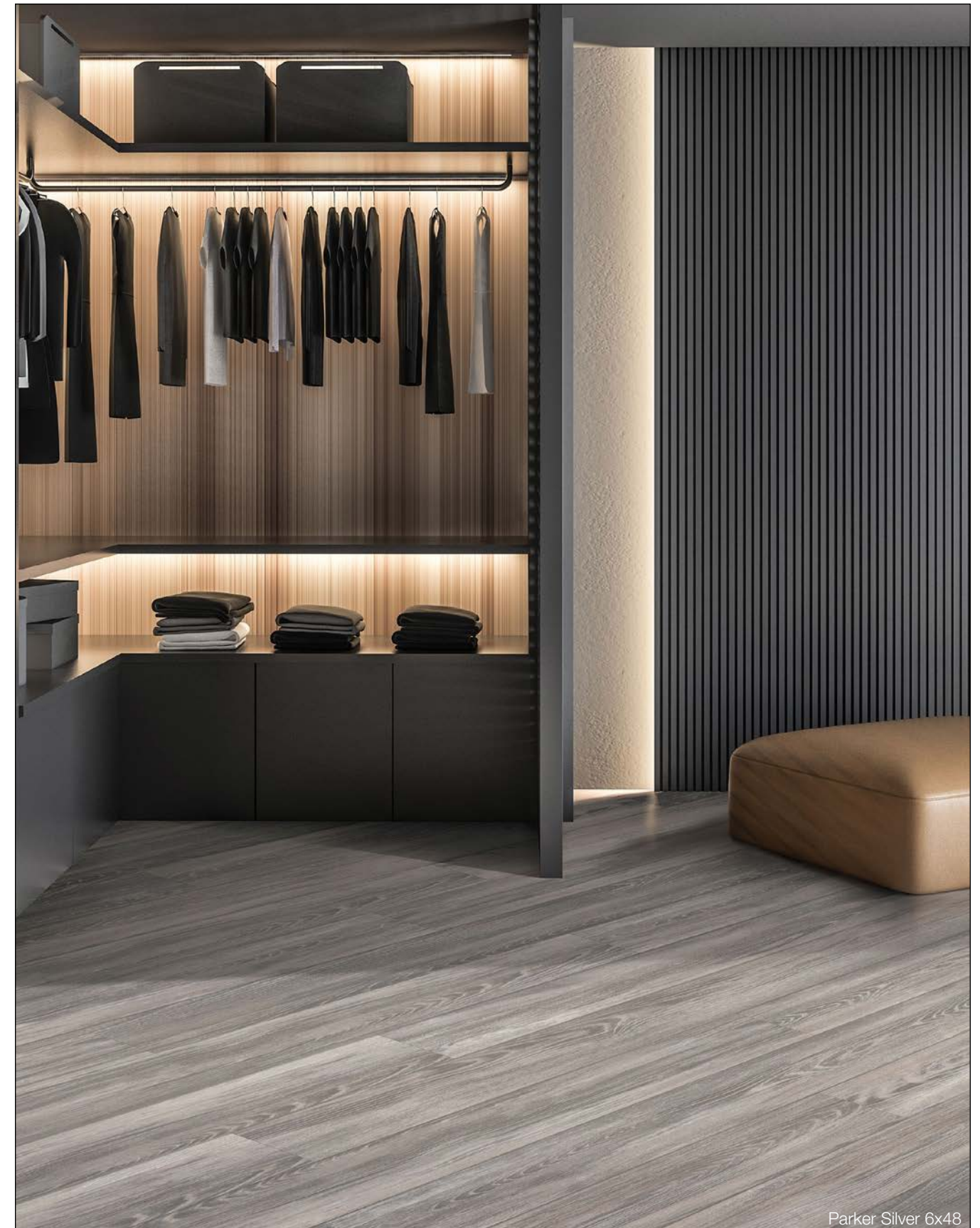
Limited Lifetime Warranty on Residential Installations
Limited 20-Year Warranty on Commercial Installations

Mott Planks and Travertina Tiles

Limited Lifetime Warranty on Residential Installations
Limited 6-Year Warranty on Light to Medium Commercial Installations

Shore Planks

Limited Lifetime Warranty on Residential Installations
Limited 15-Year Warranty on Commercial Installations





Daroca Greige 7x48

mosaic

Products. Design. Solutions.

Alexandria, VA | Chantilly, VA | Fairfax, VA | Richmond, VA | Virginia Beach, VA
North Bethesda, MD* | Owings Mills, MD* | Greensboro, NC | Raleigh, NC

www.mosaictileco.com



Noted (*) locations are 100% wind powered! All locations support renewable power sources.

