

Mod Slate

12x24 Porcelain

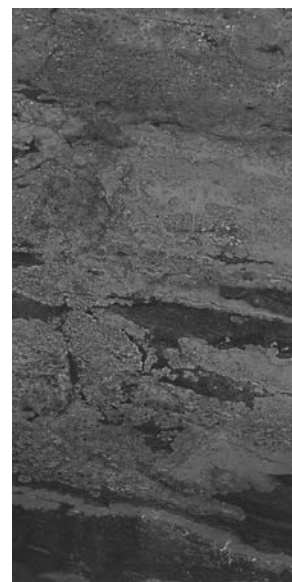
mosaic 
Products. Design. Solutions.



75MODBEI1224



75MODGRA1224



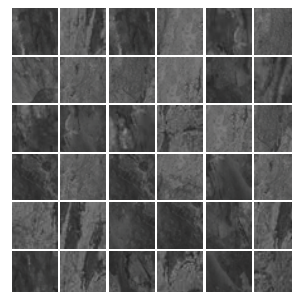
75MODCHA1224



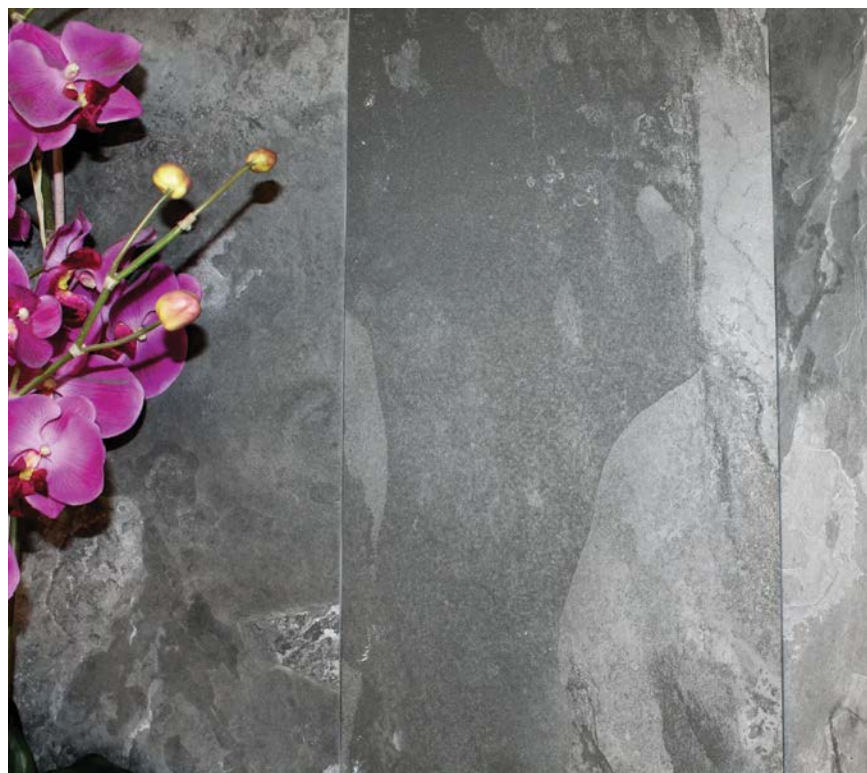
75MODBEI2M



75MODGRA2M



75MODCHA2M



QuickSHIP (noted colors only)

Tile: 12x24

Mosaic: 2x2

Recommended Jolly Edge Trim: 3/8"
MODGRA - J100 Classic Gray
MODCHA - A100 Matte Black

Non-QuickSHIP items are available for commercial projects only. Inquire with a sales representative for additional information.

Tile: 12x24

Mosaic: 2x2

Trim: 4x12 Bullnose

For more information and images:



Technical Characteristics

Test Item	Test Method	Test Result
Breaking Strength	ASTM C648	≥ 325 lbs.
Scratch Hardness	MOH'S	7
Chemical Resistance	ASTM C650-04	Class A
Abrasion Resistance	ASTM C1027	Class III
Thermal Shock Resistance	ASTM C484	Resistant
Frost Resistance	ASTM C1026	Resistant
Water Absorption	ASTM C373	< 0.5%
DCOF (Wet)	ASTM C1028	≥ 0.42
Category of Use	ANSI A326.3	IW

Nominal Size	Actual Size	Thickness	Finish	Rectified
12" x 24"	11-3/4" x 23-11/16"	8.2 mm	Matte	-
2" x 2" Mosaic	11-3/4" x 11-3/4"	8.2 mm	Matte	-
4" x 12" Bullnose	4" x 11-3/4"	8.2 mm	Matte	-

All tile is subject to variations in technical specifications and performance due to the inherent variables in the raw materials and production process. It is understood that test results on a particular product may vary slightly from tile to tile and from test to test. Test results are not guarantees of minimum or maximum thresholds of performance.

Installation Note: The TCNA recommends rectangular shape tile be installed with maximum of 33% offset in order to resolve any possible lippage from one tile to the next.

