

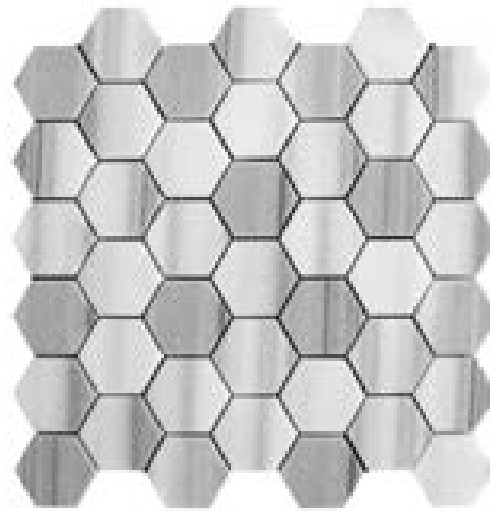
Natural • MARMARA COLLECTION

The Marmara Collection was inspired to embody the elemental elegance of the stone. The shapes and patterns in this collection complement the materials layered veining making it ideally suited for mid-century and classic contemporary interiors and exteriors.



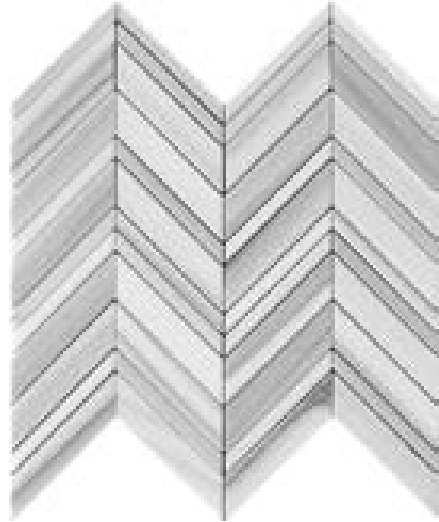
Sheet size: 12.2x13.2"
Material: Equator

BURSA
73MRM-01



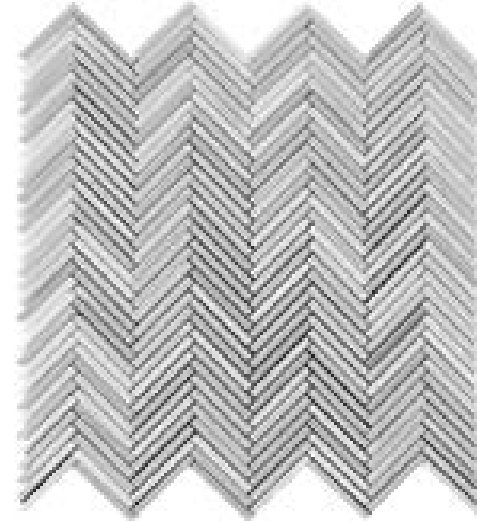
Sheet size: 11.8x11.8"
Material: Equator

BURGAZ
73MRM-G28



Sheet size: 12x12.2"
Material: Equator

EDIRNE
73MRM-CV05



Sheet size: 11x11.4"
Material: Equator

TROY
73MRM-CV06



Sheet size: 11.9x12.8"
Material: Equator

BOSPHORUS
73MRM-H12



Sheet size: 10"x10"
Material: Equator/Thassos

DARDANELLES
73MRM-S17

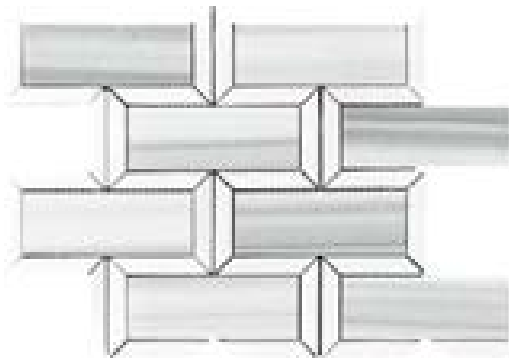


Photo features 73MRM-CV05



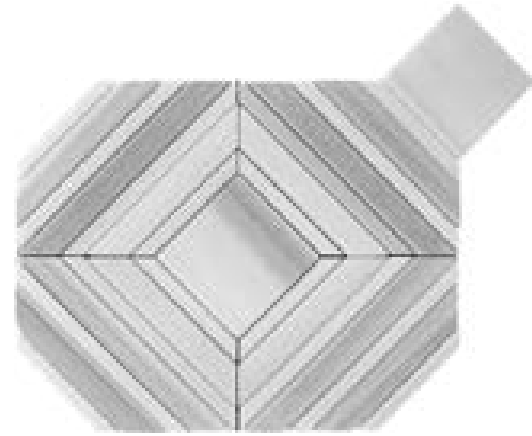
Variation in color, shade, finish, hardness, strength and slip resistance is inherent in Natural stone products. White marbles contain naturally occurring deposits of iron which may lead to discoloration of marble and turning it yellow-rust or gray if used in wet areas. These are natural characteristics of the stone and that is why it cannot be considered as a defect in the product. We are in no way responsible for discoloration of the natural stones.





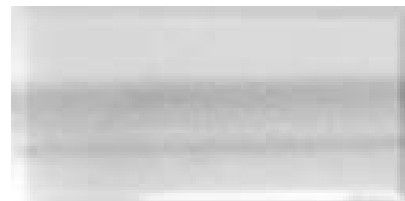
BOZCAADA
73MRM-R05

Sheet size: 9.7x12"
Material: Equator / Thassos



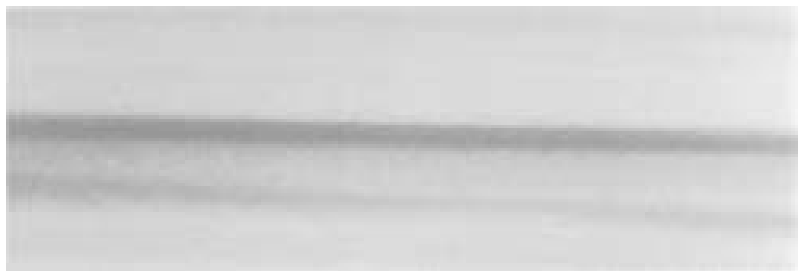
ISTANBUL
73MRM-S16

Sheet size: 11.3"x9"
Material: Equator



EQUATOR 3X6 BEVELED
AND POLISHED
73FMR-36BP

Size: 3x6" Material: Equator



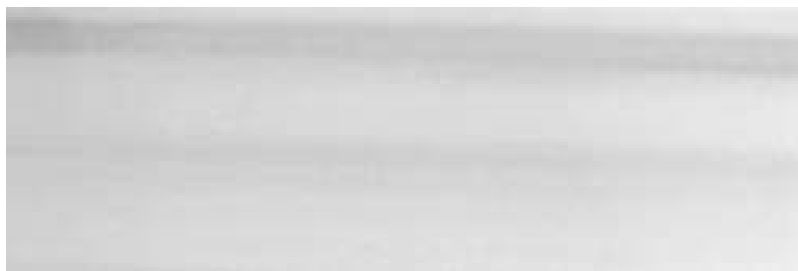
EQUATOR 4X12 HONED
73FMR-412H

Size: 4x12"
Material: Equator



EQUATOR 3X6 HONED /
EQUATOR 3X6
POLISHED
73FMR-36H / 73FMR-36P

Size: 3x6" Material: Equator



EQUATOR 4X12 POLISHED
73FMR-412P

Size: 4x12"
Material: Equator

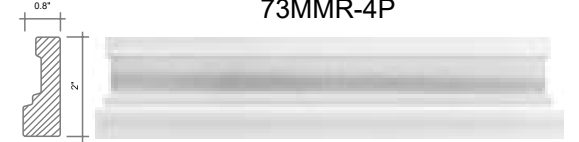


EQUATOR PENCIL POLISHED
73MMR-1P

Size: 0.6x0.7x12"
Material: Equator



EQUATOR METRO PENCIL POLISHED
73MMR-4P

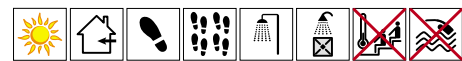


EQUATOR METRO RAIL POLISHED
73MMR-5P

Size: 2x0.8x12" / 0.8x0.8x12"
Material: Equator



Photo features 73MRM-S16



Variation in color, shade, finish, hardness, strength and slip resistance is inherent in Natural stone products. White marbles contain naturally occurring deposits of iron which may lead to discoloration of marble and turning it yellow-rust or gray if used in wet areas. These are natural characteristics of the stone and that is why it cannot be considered as a defect in the product. We are in no way responsible for discoloration of the natural stones.