

Basalt

Crossville, Inc. PO Box 1168
Crossville, TN
38557

Phone 931.484.2110
Fax 931.456.2956
E-Mail Crossc@CrossvilleInc.com
Web CrossvilleInc.com

Recommended Use

Basalt is recommended for interior floors, walls, countertops, and exterior walls in both residential and commercial applications. Basalt is not recommended for exterior horizontal surfaces or exterior paving. If offset pattern is required for tiles 18 inches or longer, Crossville® recommends an offset of not greater than 33%. If an offset greater than 33% is specified, specifier and owner must approve mock-up and lippage. See CrossvilleInc.com for detailed installation instructions.

Care and Maintenance

Regular cleaning is the best way to keep Basalt tile looking good for years to come. Use clean, hot water (combined with a household cleaner for more aggressive cleaning). Rinse thoroughly and dry with a soft cloth. No waxes are needed. More information regarding the care and maintenance of Crossville® products is available at CrossvilleInc.com.

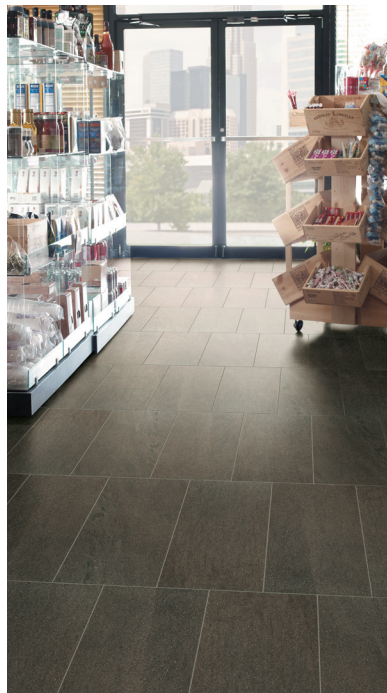


Photo left: **AV294** ▶ Mafic 12 x 24 UPS

EcoCycle Tile Process™

Basalt contains a minimum of 4 percent pre-consumer recycled content and is manufactured by Crossville® using processes that recycle nearly 12 million pounds of previously discarded filtrate and fired tile waste. In addition to its own fired waste recycling, Crossville also accepts and recycles reclaimed, previously installed tile through its Tile Take-Back™ Program. For more information, visit CrossvilleInc.com/green.

Green SquaredSM Certified

Crossville® has earned Green SquaredSM certification from the Tile Council of North America (TCNA) for its entire U.S.-manufactured porcelain product line-up, as well as its manufacturing processes. The company is among the first ever recipients of this certification standard for the tile industry. TCNA developed the Green Squared certification under American National Standards Institute (ANSI) process. The multi-attribute program (ANSI A138.1) scores products in five categories of performance: product characteristics, manufacturing, corporate governance, innovation and end-of-life. Crossville's certified products and processes received stringent evaluation from Scientific Certification Systems (SCS), the green building industry's longest standing third-party certifier.

Hydrotect

Our porcelain tiles are available with Hydrotect™. Crossville's revolutionary invisible coating harnesses the power of light, water, and oxygen to create the best defense against dirt and pollution. Whether indoors or out, floors and walls stay cleaner, providing a superior experience in any space. For complete details check our website at CrossvilleInc.com.



National Accounts

For over 20 years we have been offering Porcelain tile to commercial customers at National Accounts pricing programs with special discounts. The National Accounts department provides materials forecasting, sales support and samples.

Exterior Cladding

Crossville's Porcelain Stone® Exterior Cladding Systems are suitable for virtually any conventional masonry application. When used in conjunction with our exterior cladding systems, Crossville's Porcelain Stone offers clear advantages: decreased construction costs, less site disturbance, low-to-zero maintenance after installation, accelerated construction schedules and greater strength than traditional masonry.

▶▶ Crossville® Sample Express

Sample fulfillment & Help Line

Samples@CrossvilleInc.com
1 800 221.9093

Loose Samples for Architects & Designers

Loose Tile Samples

Sizes may vary depending on product series
Max. of 4 large field tile per order

Replacement Chips for PSS Rack

Max. of 5, 2 x 2 chips per color

Standard Shipping

UPS Ground

Our Warranty

Crossville Inc. guarantees that its products will meet or exceed the performance specifications outlined in ANSI A137.1-2012 and in the performance data section of the Crossville, Inc. general product catalog. For complete details check our website at CrossvilleInc.com.

Information listed here is subject to change.

Please refer to CrossvilleInc.com for the latest, most accurate information.

Trade Organizations



Environmentally Aware

