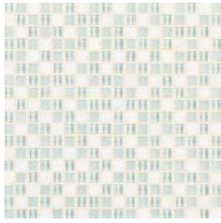


Ebb + Flow

Glass and Natural Stone Wall

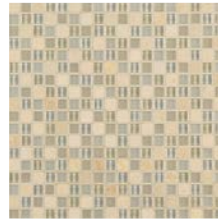
mosaic
Products. Design. Solutions.



03EF0112M



03EF0612M



03EF0212M



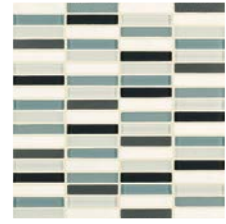
03EF0312M



03EF0412M



03EF01123M



03EF06123M



03EF02123M



03EF03123M



03EF04123M



03EF011213LM



03EF061213LM



03EF021213LM



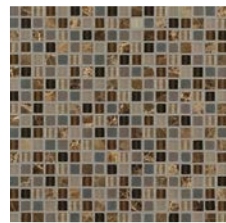
03EF031213LM



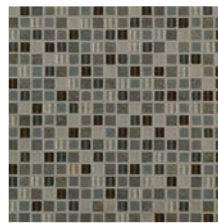
03EF041213LM



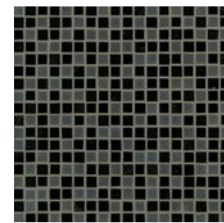
03EF0512M



03EF0712M



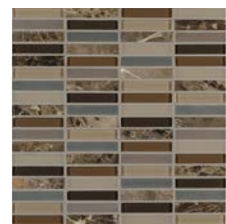
03EF0812M



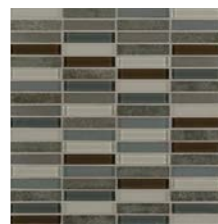
03EF0912M



03EF05123M



03EF07123M



03EF08123M



03EF09123M



03EF051213LM



03EF071213LM



03EF081213LM



03EF091213LM

Mosaics: 1/2x1/2 - 1/2x3 Stacked - Linear

v.12-22

For more information
and images:



Ebb + Flow

Glass and Natural Stone Wall



Technical Characteristics

Nominal Size	Actual Size	Thickness
1/2" x 1/2" Mosaic	11.75" x 11.75"	1/4"
1/2" x 3" Stacked Mosaic	11.75" x 11.75"	1/4"
Linear Mosaic	11.75" x 13"	1/4"

Ebb + Flow mosaics are recommended for interior and exterior walls. In wall applications exposed to regular moisture, a penetrating sealer is required. Ebb + Flow is not recommended in water applications such as pools, fountains, and spas. The mosaics are suitable for covered exterior walls in freezing climates.

